

透科自动化

Ethernet/IP R51CX-EP FANUC



2022-11-09

2022 11 9

2022 11 9

FANUC Ethernet/IP IO

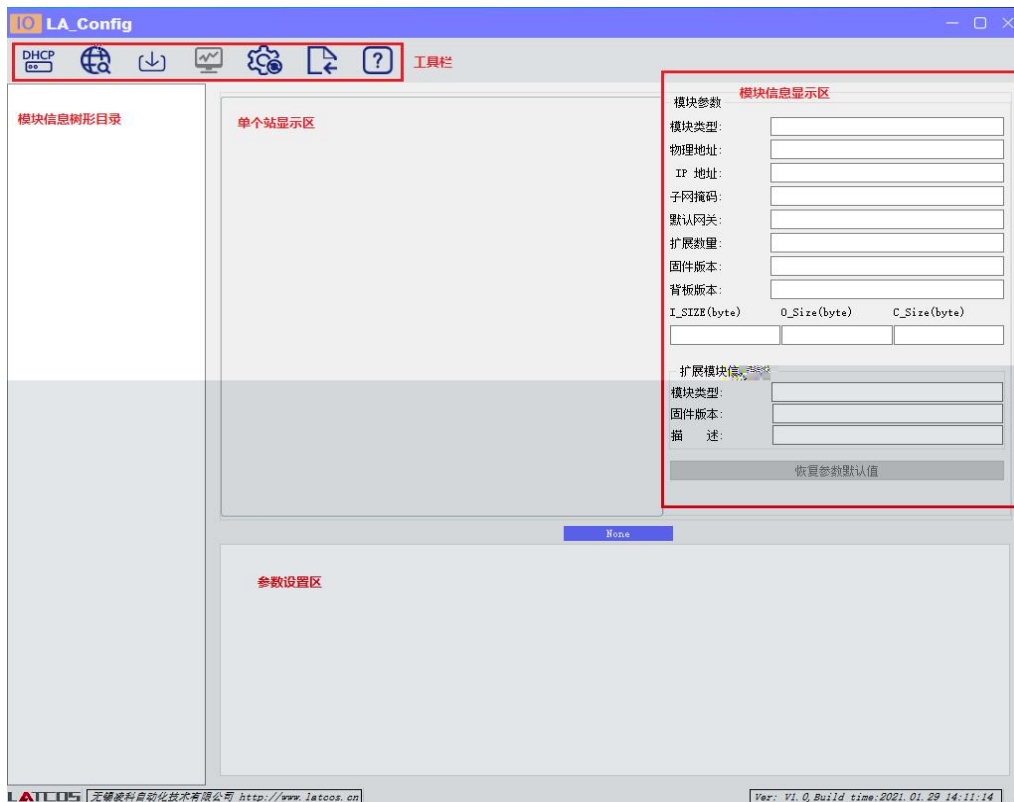
FANUC Ethernet/IP IO EtherNET/IP
IO

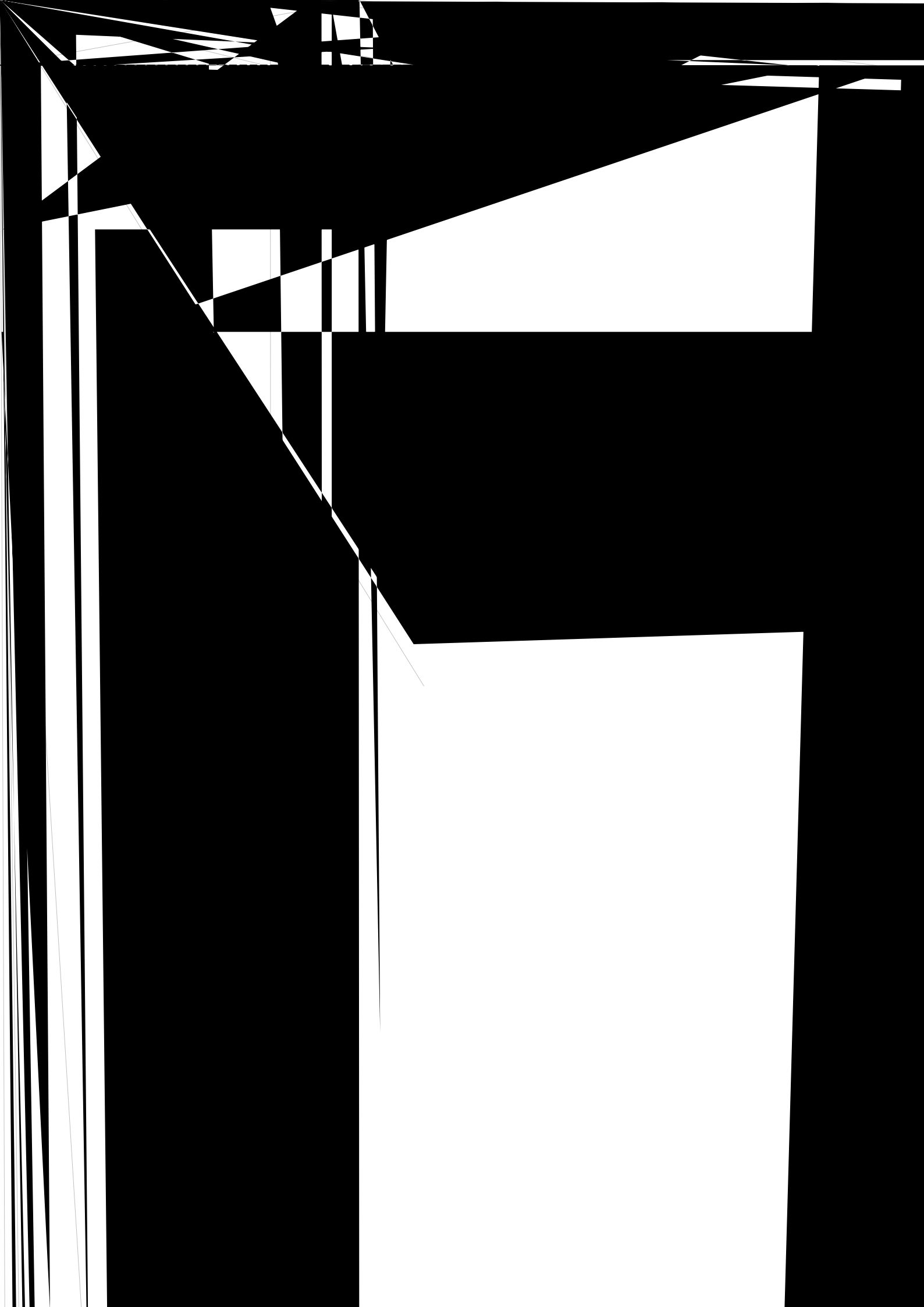
- FANUC
- IO SRX_EP20220513.eds

1.FANUC IO

2. FANUC Ethernet IO

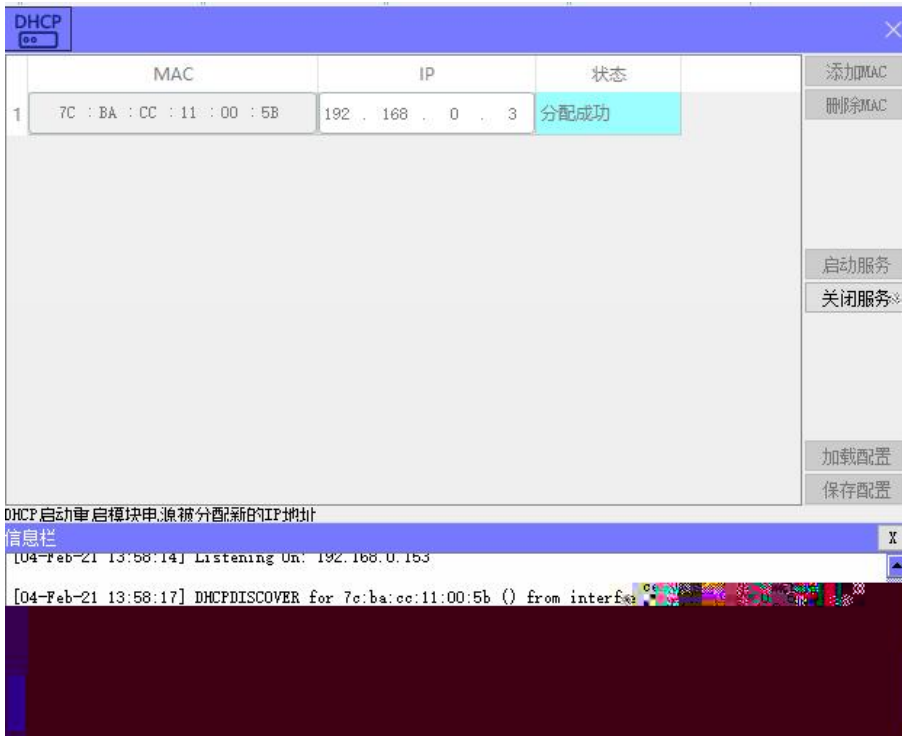
LAEConfig IP IP 192.168.0.x







DHCP DHCPService " MAC" " MAC"
 MAC IP " "
 IP



" "



Window with a blue header and a close button. Below the header is a table with the following columns: mac, IP地址, 子网掩码, 默认网关, 模块名称, 状态.

mac	IP地址	子网掩码	默认网关	模块名称	状态
-----	------	------	------	------	----

At the bottom of the window, there is a control bar with the following elements:

- 扫描时间: 5 :S
- 全局扫描
- 修改IP
- 恢复出厂设置
- 重启模块

Window with a blue header and a close button. Below the header is a table with the following columns: mac, IP地址, 子网掩码, 默认网关, 模块名称, 状态.

mac	IP地址	子网掩码	默认网关	模块名称	状态
1 : 7C-BA-...	192 . 168 . 0 . 3	255 . 255 . 255 . 0	192 . 168 . 0 . 1	R51C1-EP	未操作

At the bottom of the window, there is a control bar with the following elements:

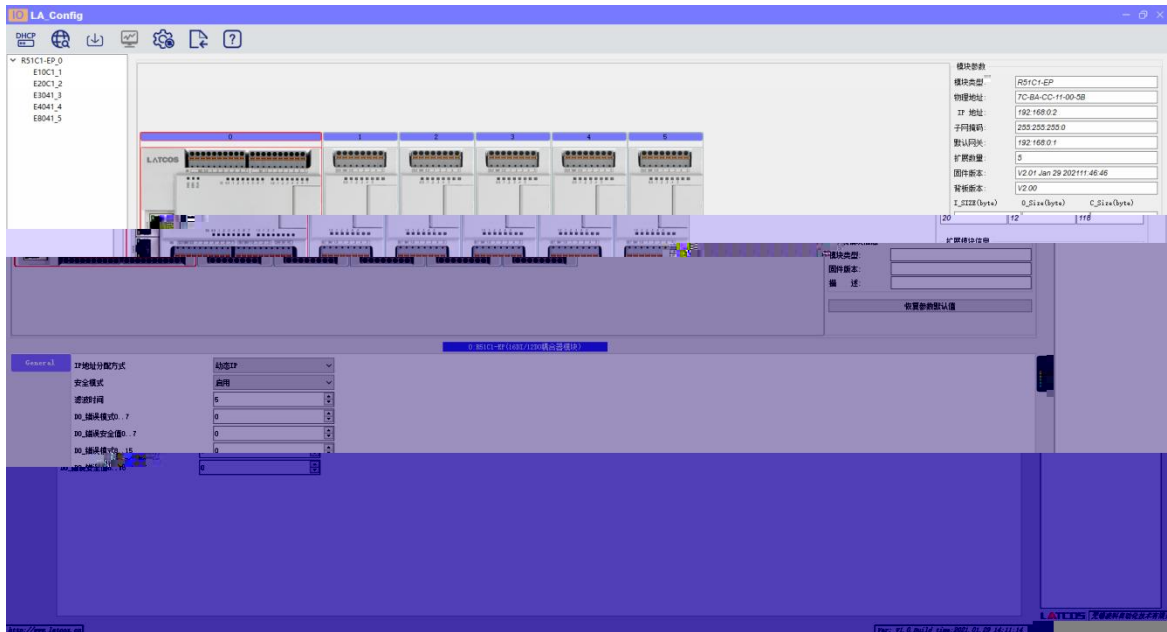
- 扫描时间: 5 :S
- 全局扫描
- 修改IP
- 恢复出厂设置
- 重启模块

Below the control bar, there is a progress indicator: 扫描进行中: [Green bar] 100%

IP

" IP"

IP




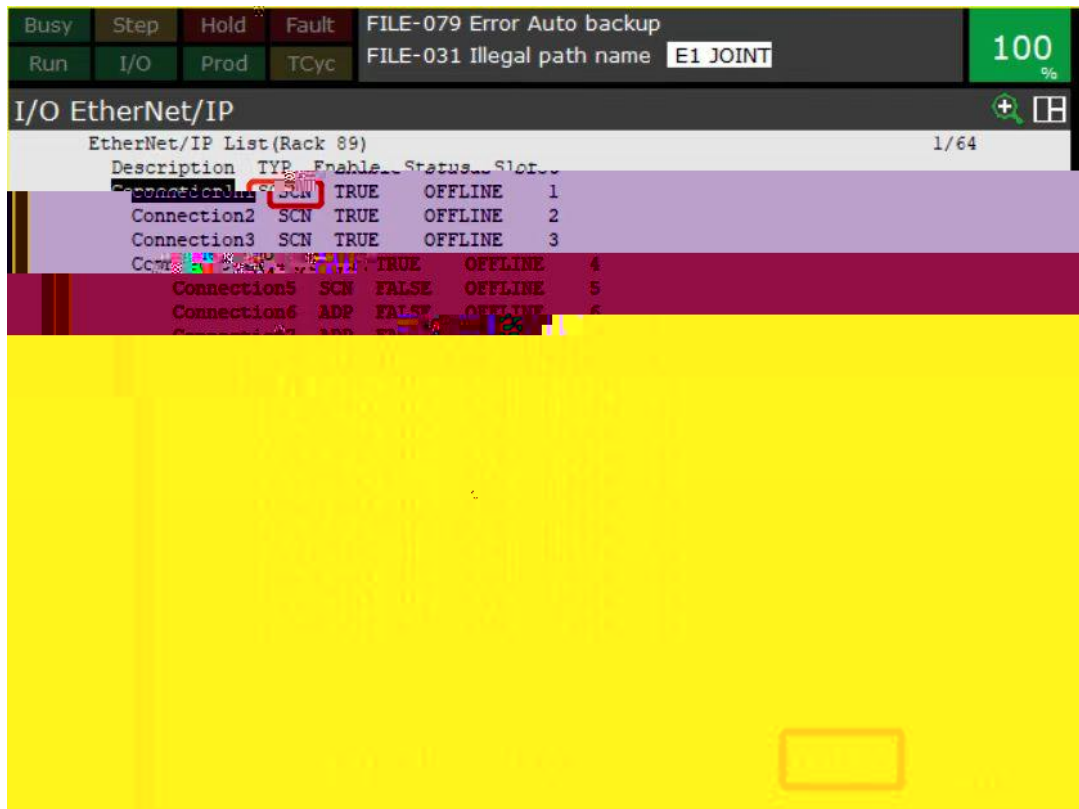
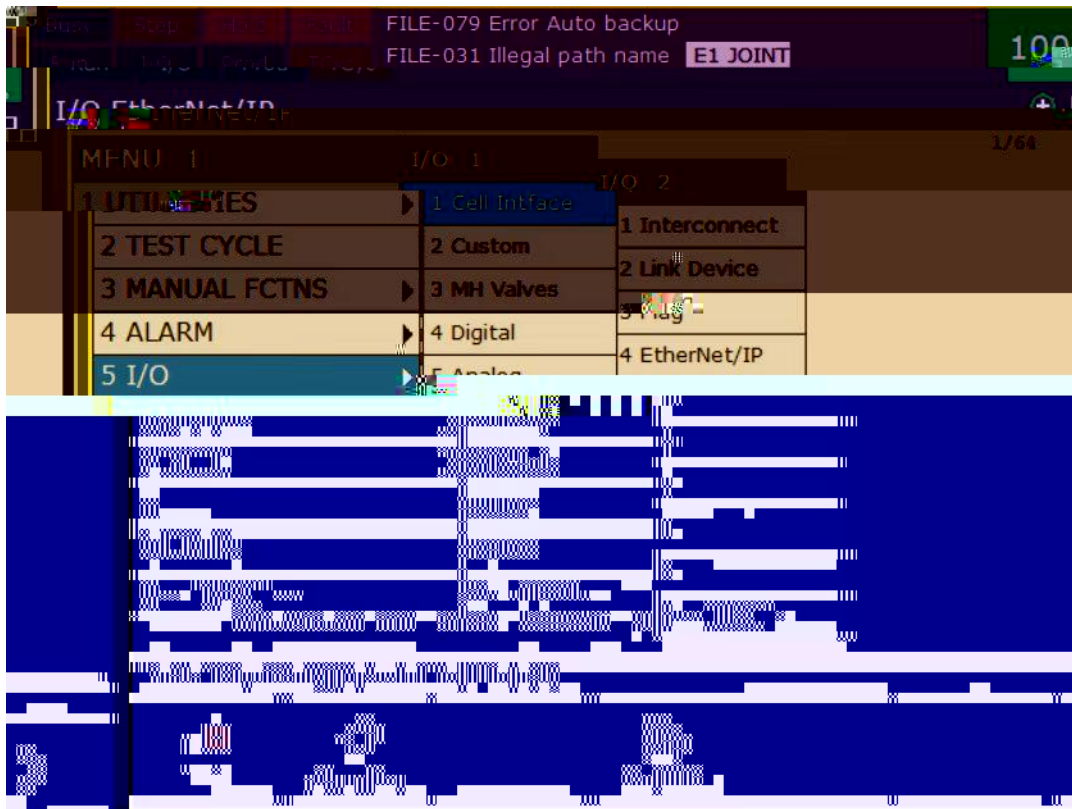
/

1

2) DO_ 0.7 DOQ.x bit
 DOQ.x Bit0 DQ-0.0 "Error Mode"
 bit "1" "Error Value[7..0]" bit DOQ.x

3) DO_ 0.7 "Error Mode[7..0]" bit
 DQ

4) "  "



Busy	Step	Hold	Fault	FILE-079 Error Auto backup	100%
Run	I/O	Prod	TCyc	FILE-031 Illegal path name E1 JOINT	

I/O EtherNet/IP

Scanner config(Read-only) : 1/1

```

Description :      Connection1
Name/IP address : 192.168.0.51
Vendor Id : 2546
Device Type : 7
Product code : 65021
Input size ( bytes): 4
Output size ( bytes): 1
RPI (ms) : 32
Assembly instance(input) : 100
Assembly instance(output) : 160
Configuration instance : 151
  
```




[TYPE] ADV PREV ANALOG ? HELP

Busy	Step	Hold	Fault	PNS0001 LINE 0 T2 ABORTED E1 JOINT	100%
Run	I/O	Prod	TCyc		

I/O EtherNet/IP

Scanner configuration : 1/1

Description		
Name/IP address	IP	IP
Vendor Id	ID	2546
Device Type		7
Product code		65021 SRX 65001 RX 65011 MR 65000 LUC
Input size bytes		
Output size bytes		
RPI(ms)	RPI	
Assembly instance input		
Assembly instance output		
Configuration instance		

Input size bytes	LAEconfig I_SIZE(byte) 	LAEconfig I_SIZE(byte) 
Output size bytes	LAEconfig O_SIZE(byte) 	1
Assembly instance input	100	100
Assembly instance output	150	160 1
Configuration instance	151	151

