

址

	MAC	IP	状态
1	7C : BA : CC : 11 : 00 : 56	192 . 168 . 0 . 4	未分配

添加MAC
删除MAC
启动服务
关闭服务
加载配置
保存配置

DHCP 启动单自模块申请被分配新的IP地址

信息栏



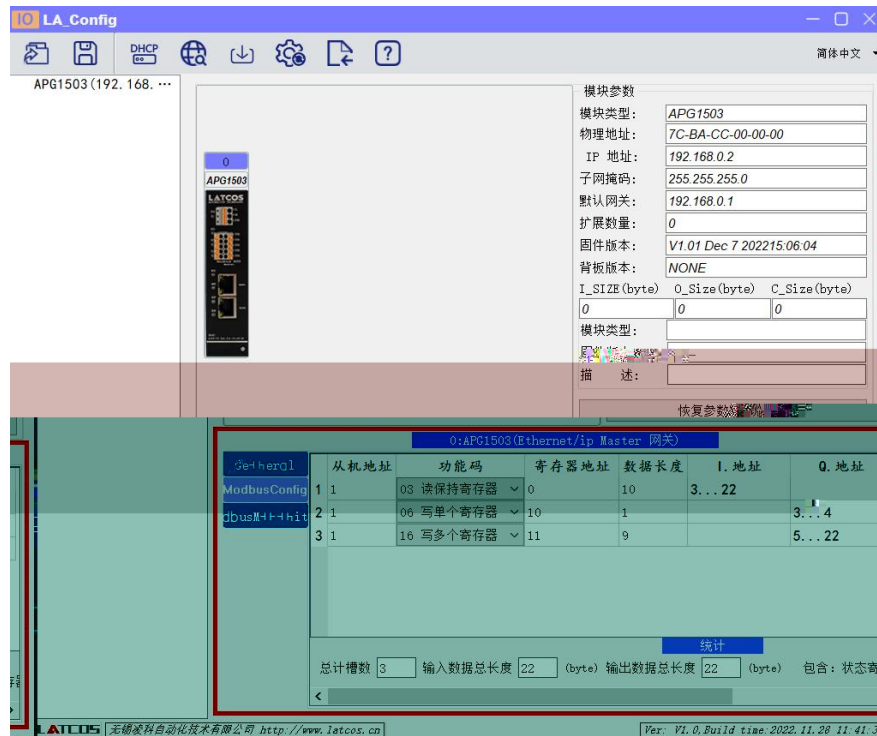
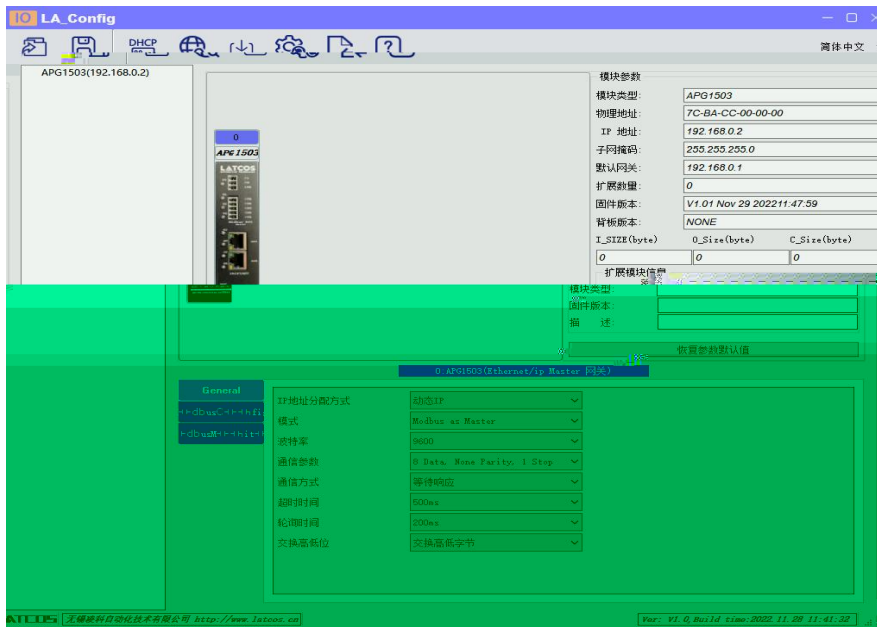
	MAC	IP	状态
1	7C : BA : CC : 11 : 00 : 5B	192 . 168 . 0 . 3	分配成功

添加MAC
删除MAC
启动服务
关闭服务
加载配置
保存配置


DHCP 启动单自模块申请被分配新的IP地址

信息栏

```
[04-Feb-21 13:58:14] Listening On: 192.168.0.153  
[04-Feb-21 13:58:17] DHCPDISCOVER for 7c:ba:cc:11:00:5b () from interface
```

Rockwell Automation's EDS Wizard ×



Welcome to Rockwell Automation's EDS Wizard

The EDS Wizard allows you to:


- register EDS-based devices.
- unregister a device.
- change the graphic images associated with a device.
- create an EDS file from an unknown device.
- upload EDS file[s] stored in a device.

To continue click Next

下一页(N) > 取消

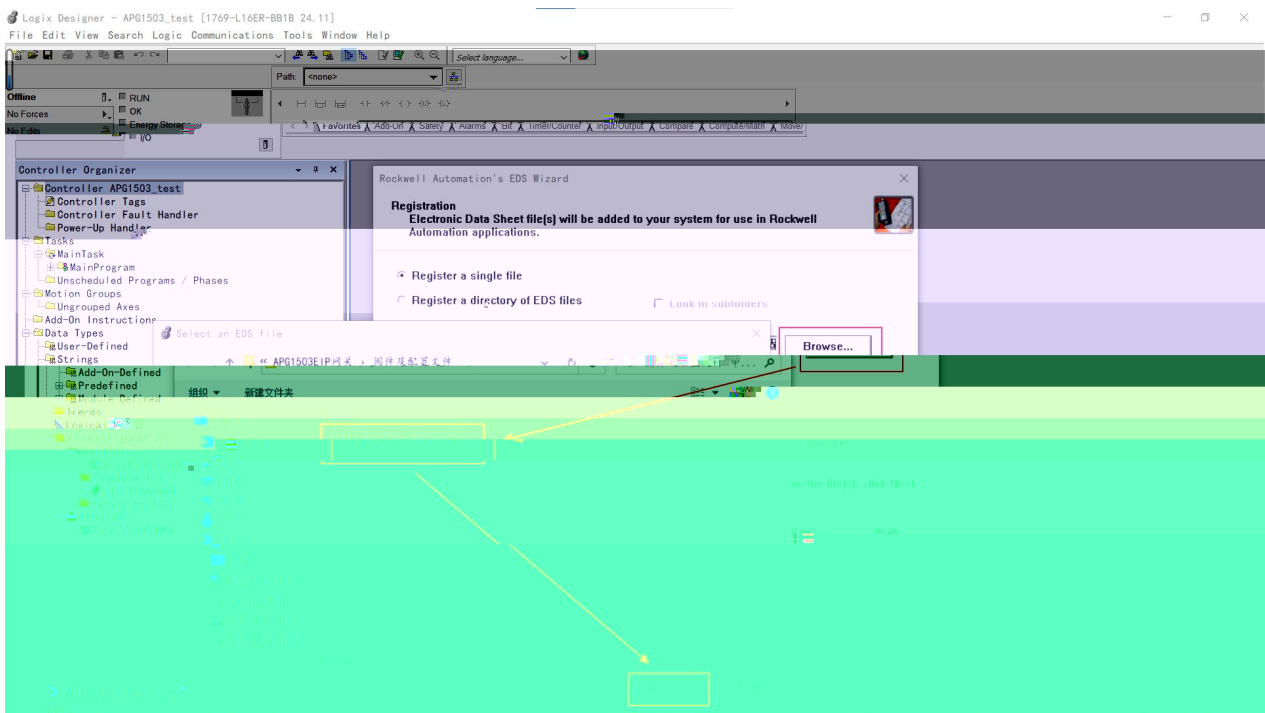
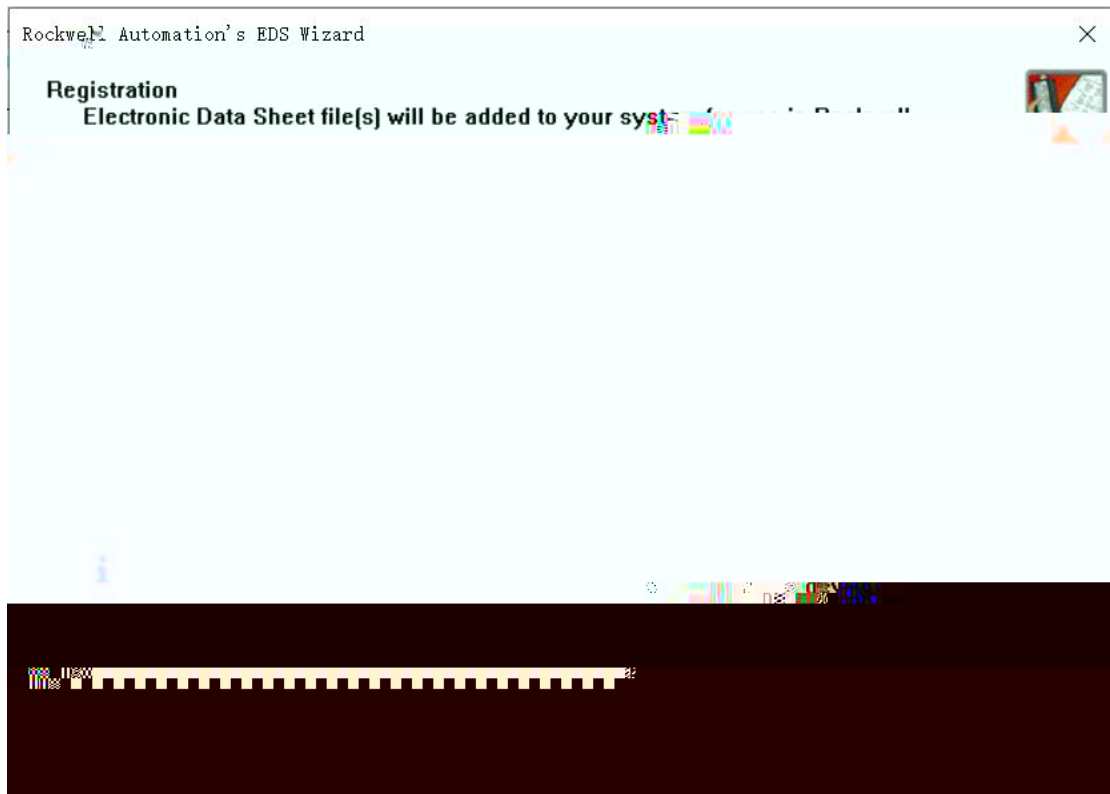
Rockwell Automation's EDS Wizard ×

Options

What task do you want to complete? 

- Register an EDS file(s).**
This option will add a device(s) to our database.
- Unregister a device.**
This option will remove a device that has been registered by an EDS file from our database.
- Create an EDS file.**
This option creates a new EDS file that allows our software to recognize your device.
- Change graphic image.**

< 上一步(B) 下一页(N) > 取消



Rockwell Automation's EDS Wizard



Final Task Summary

This is a review of the task you want to complete.



You would like to register the following device(s):

APG1503

< 上一步(B)

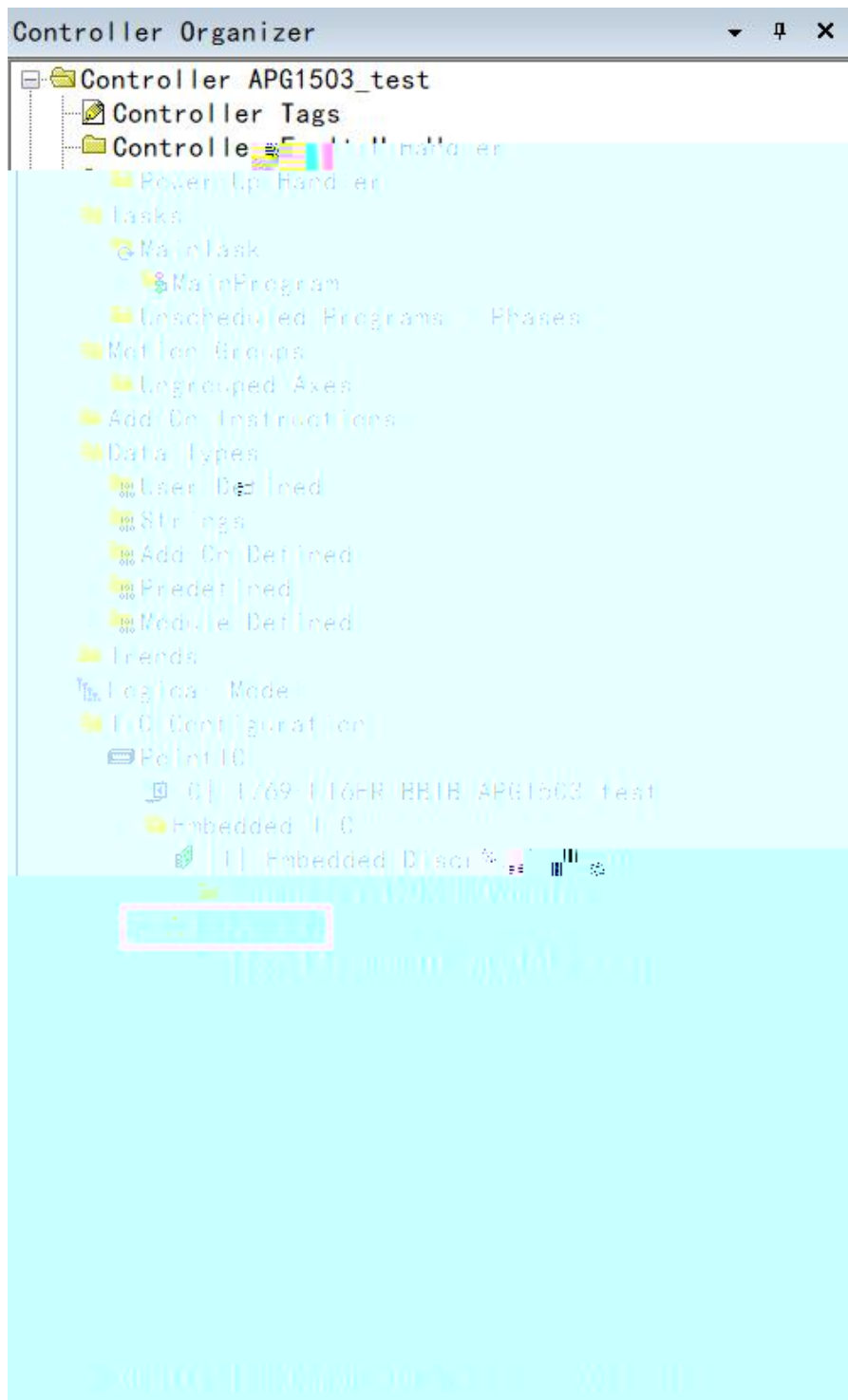
下一页(N) >

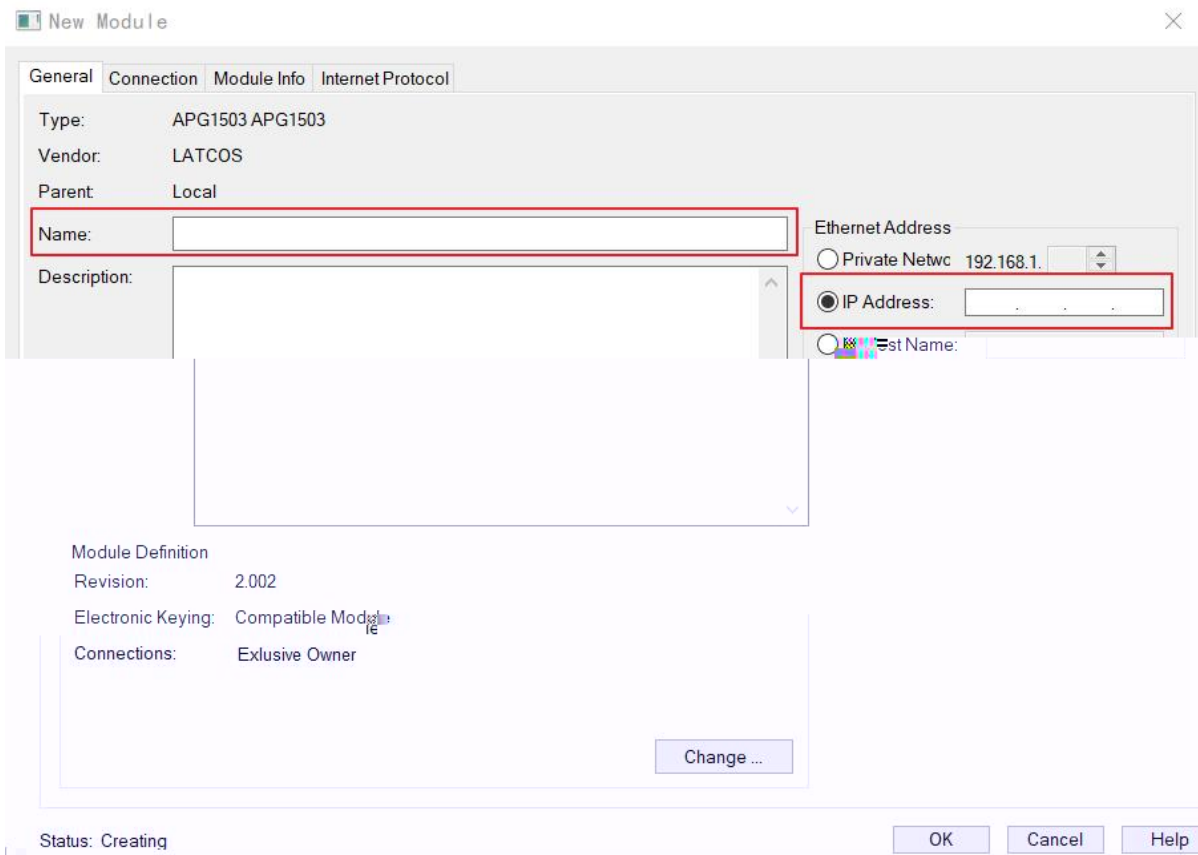
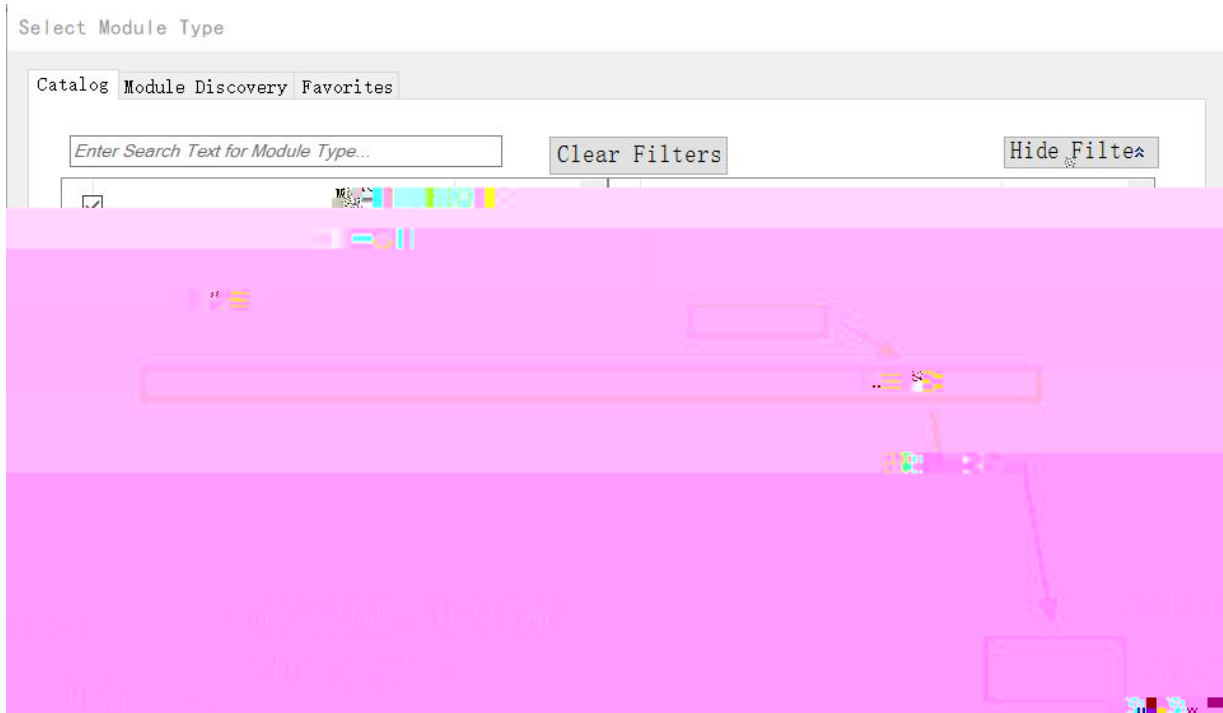
取消

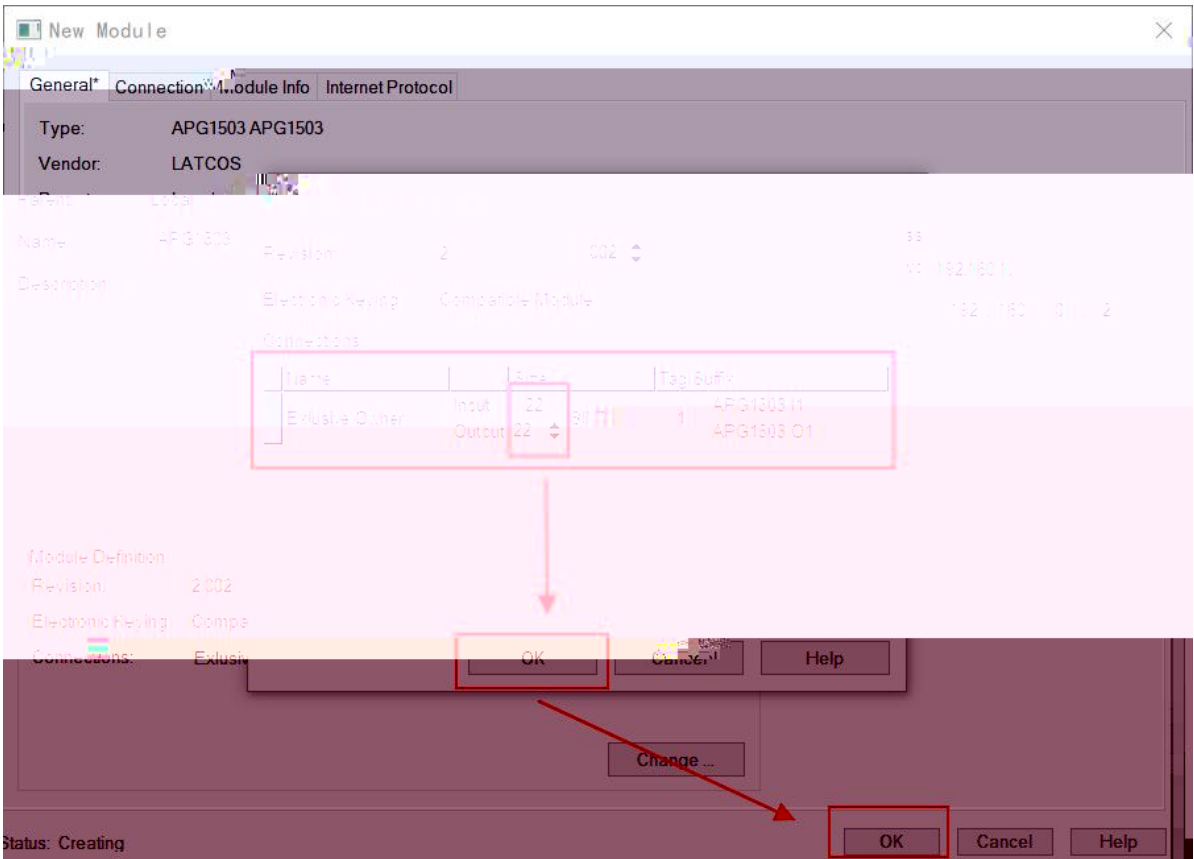
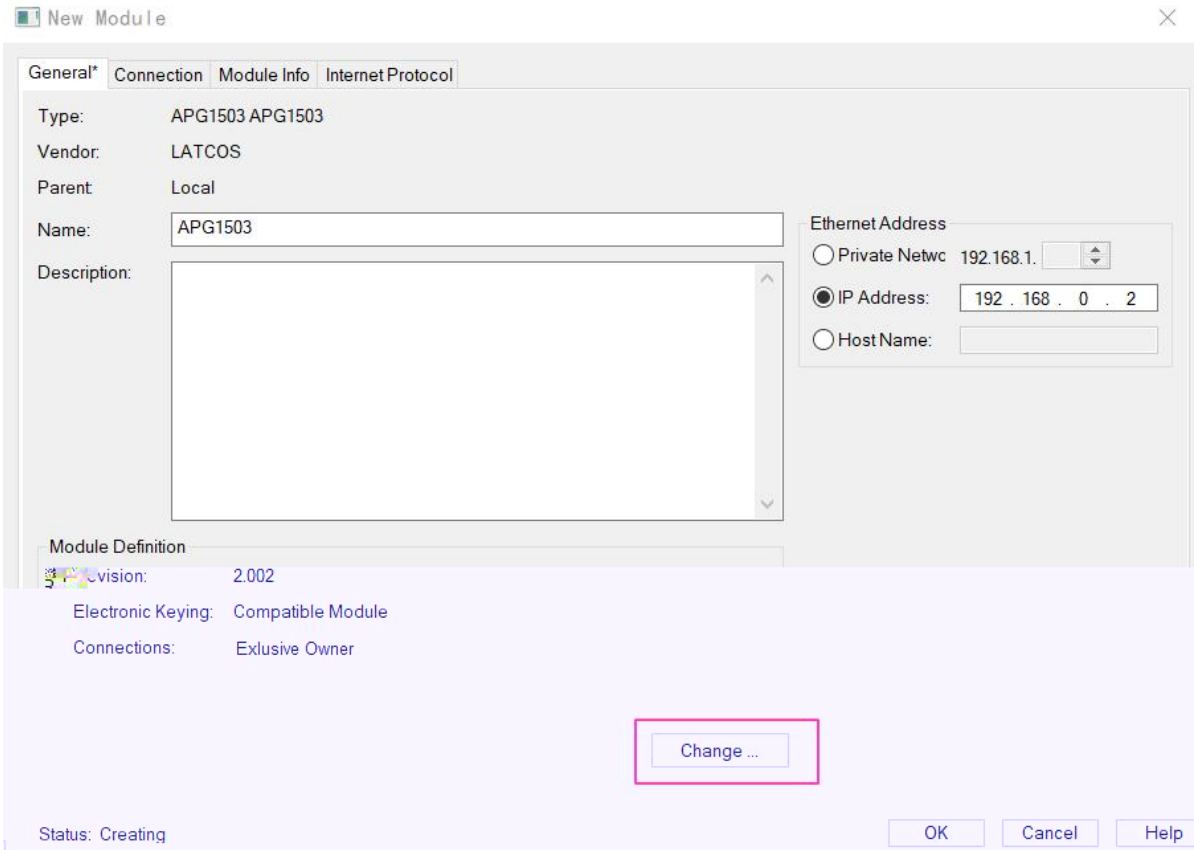
Rockwell Automation's EDS Wizard



You have successfully completed the EDS Wizard.







GetherQ1	从机地址	功能码	寄存器地址	数据长度	I. 地址	Q. 地址
ModbusConfig	1	03 读保持寄存器	0	10	3...22	
dbusM1+Hit	2	06 写单个寄存器	10	1		3...4
	3	16 写多个寄存器	11	9		5...22

统计

总计槽数 输入数据总长度 (byte) 输出数据总长度 (byte) 包含: 状态寄存器



