



凌 APG1503 列 基 士KV8000 (ethernetip)

Ethernet/IP APG-1503 KV8000



修 3

变 内 :

2021-4-13

制: 刘

2021 04 13

:

2021 04 13

1. 围

KV STUDIO Ver.10G

2.原

KV8000 Ethernet/IP APG 1503 KV STUDIO Ver.10G
APG 1503 .eds PLC modbus

3. 境

- KV STUDIO Ver.10G
- IO APG1503.eds

4.

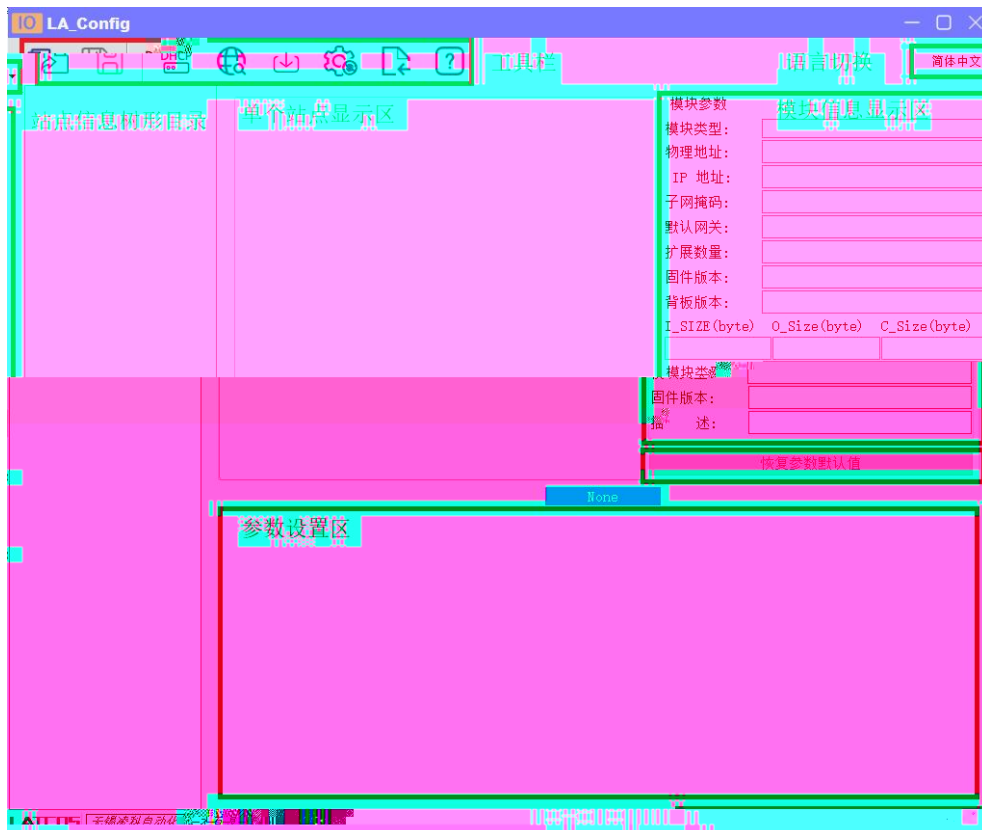
4.1 件

1. KV8000
2. PLC Ethernet

4.2 块参 及IP地址

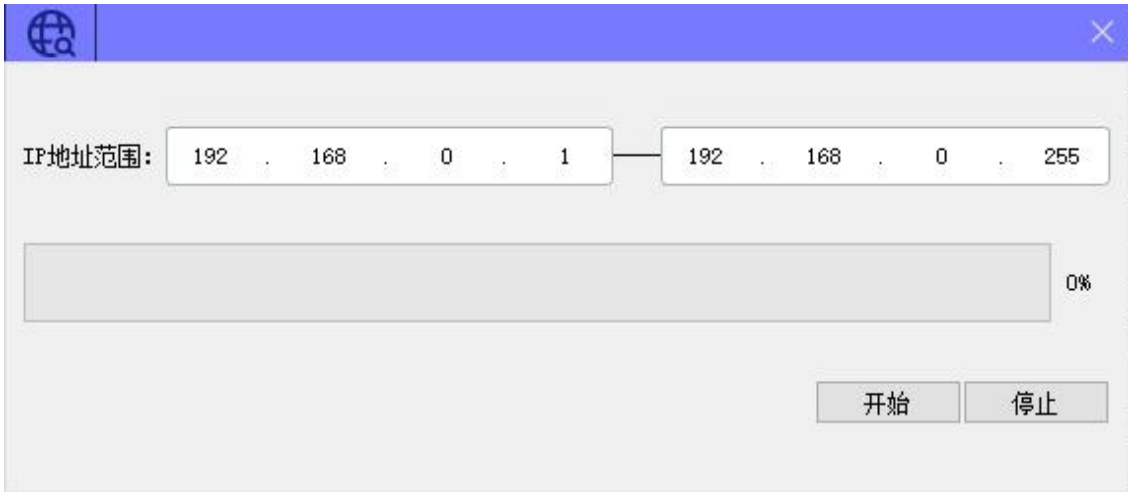
4.2.1 件全 好之后

LAEConfig IP IP 192.168.0.x





4.2.2 中 件

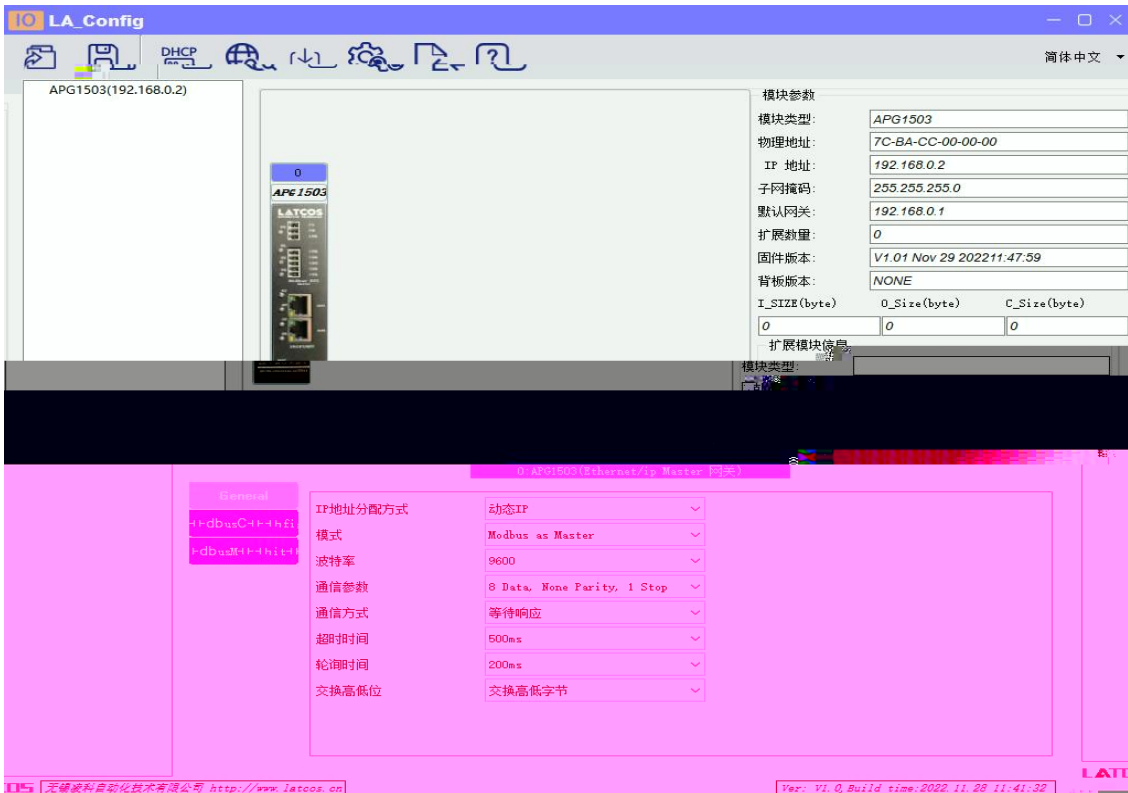


IP

IP

" "

IP



4.2.3 修改 IP 地址

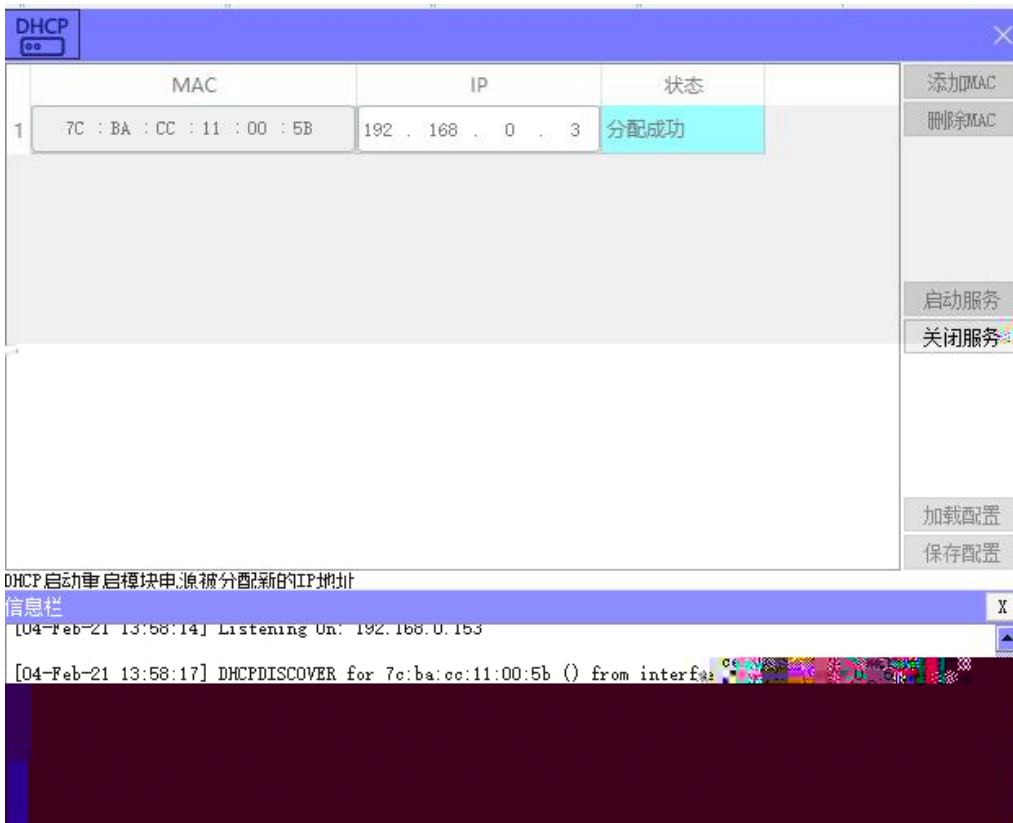
1

"IP"

IP"



DHCPService " MAC" " MAC"
MAC IP " "



" "



mac	IP地址	子网掩码	默认网关	模块名称	状态
-----	------	------	------	------	----

扫描时间 5 :S

全局扫描 修改IP 恢复出厂设置 重启模块

mac	IP地址	子网掩码	默认网关	模块名称	状态
-----	------	------	------	------	----

IP

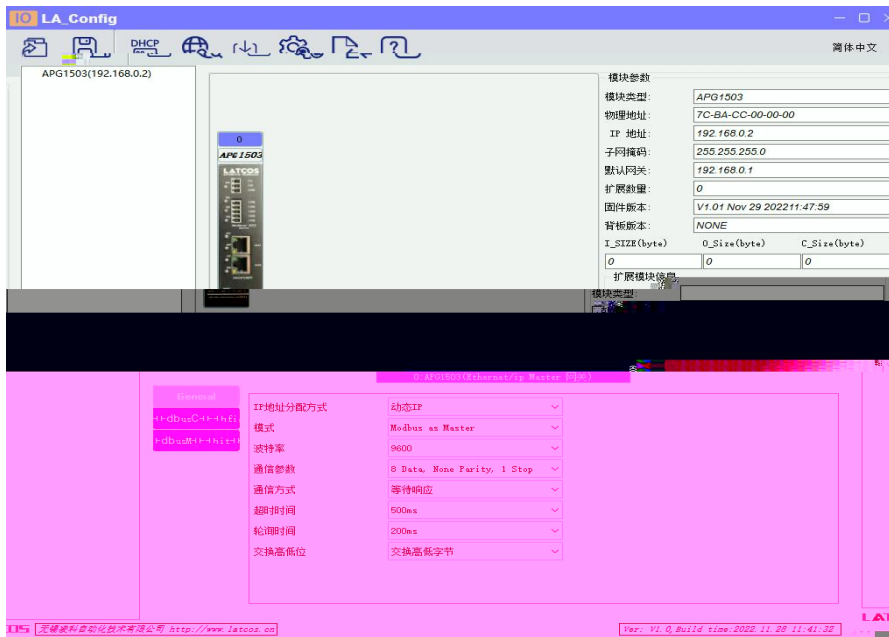
IP

“ IP”

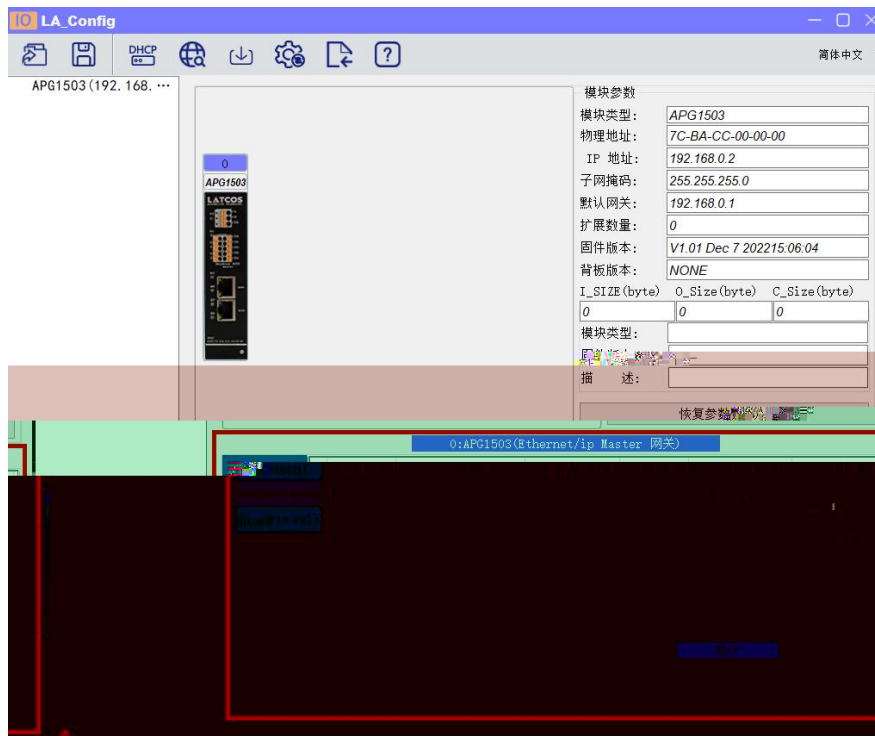
IP

4.2.4 修G 块 参

1. MODBUS



2. MODBUS



3		10 16	10 16
2	+20	modbus	22
2	+20	modbus	22



5. 块

APG1503

PLC(KV8000)

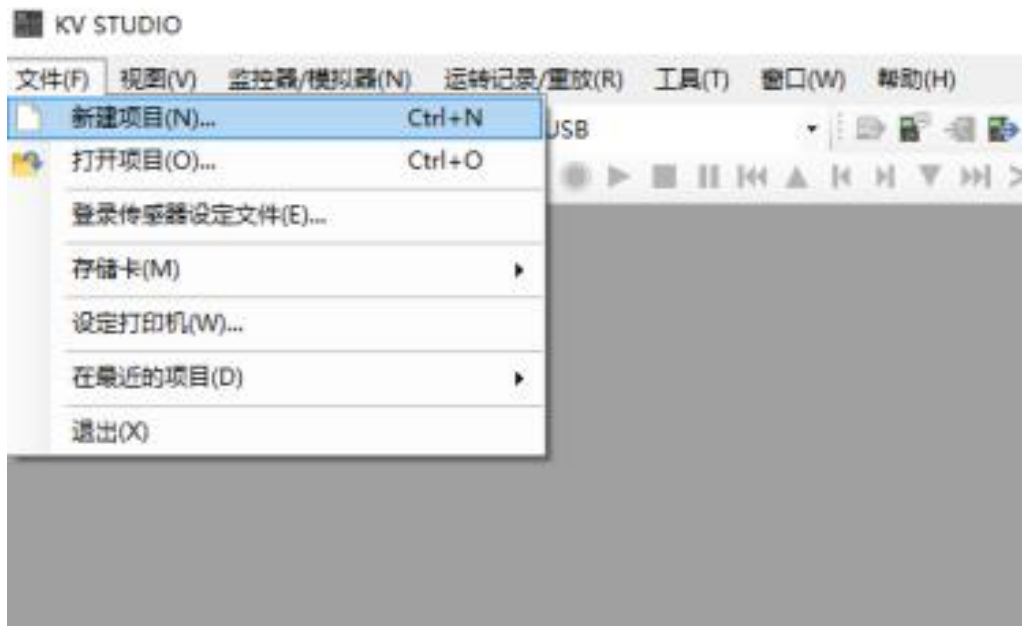
KV STUDIO

5.1 件

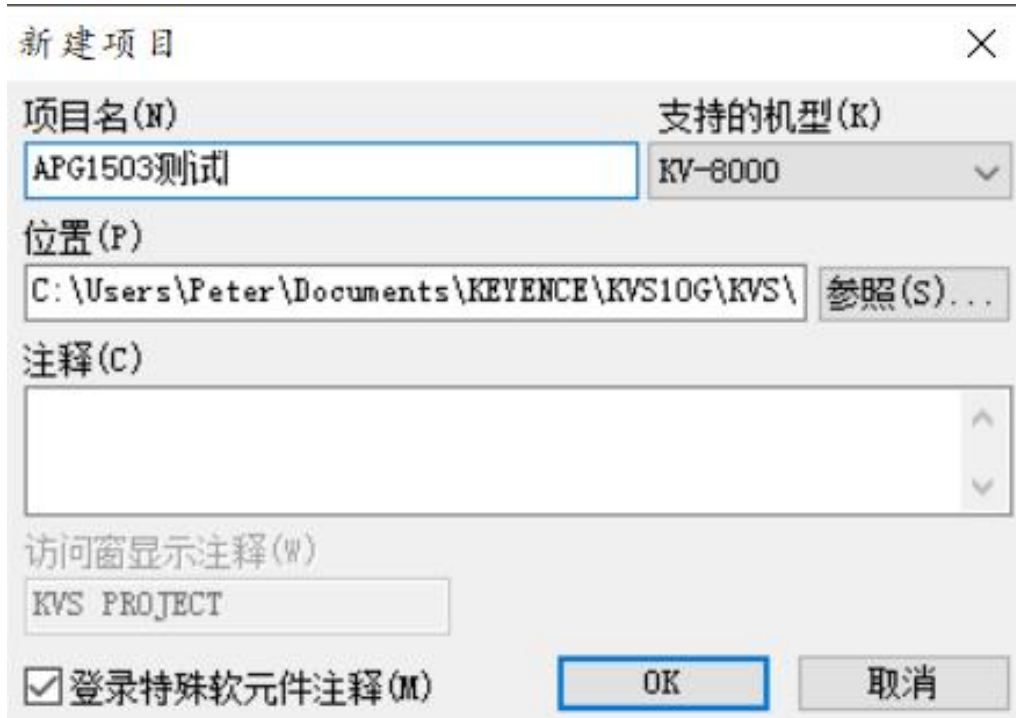
5.2创

KV STUDIO

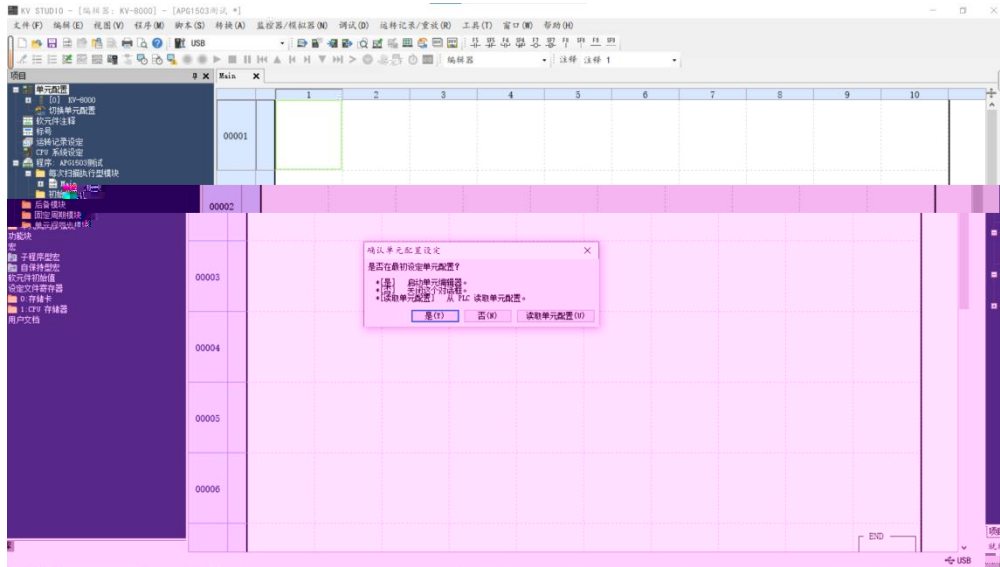
" " " "



PLC

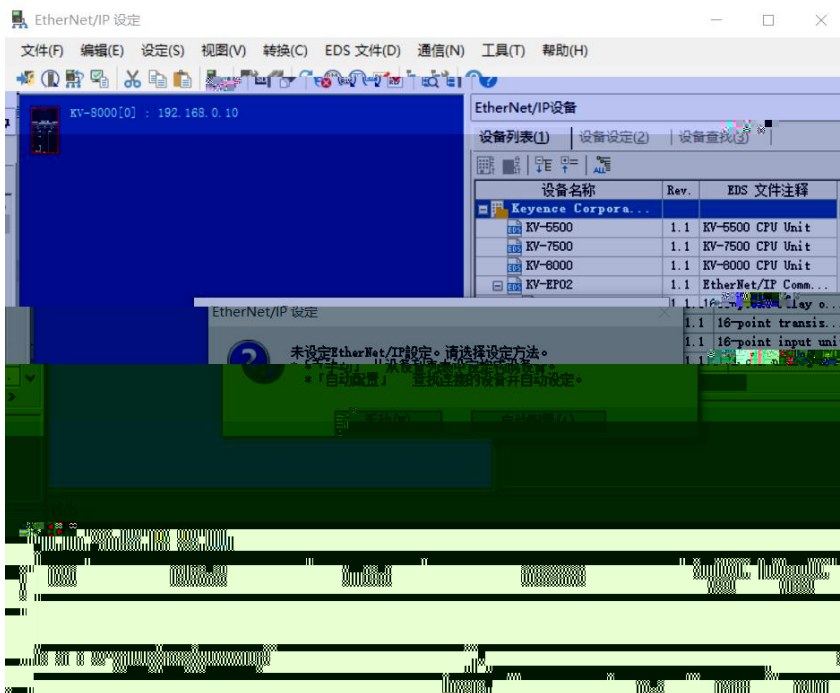
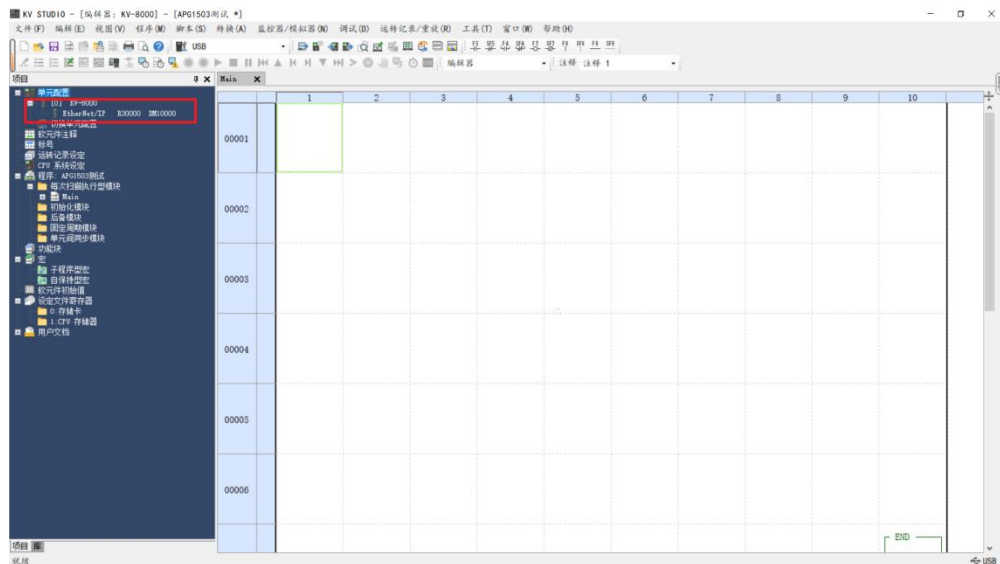


5.3 EtherNet/IP 定



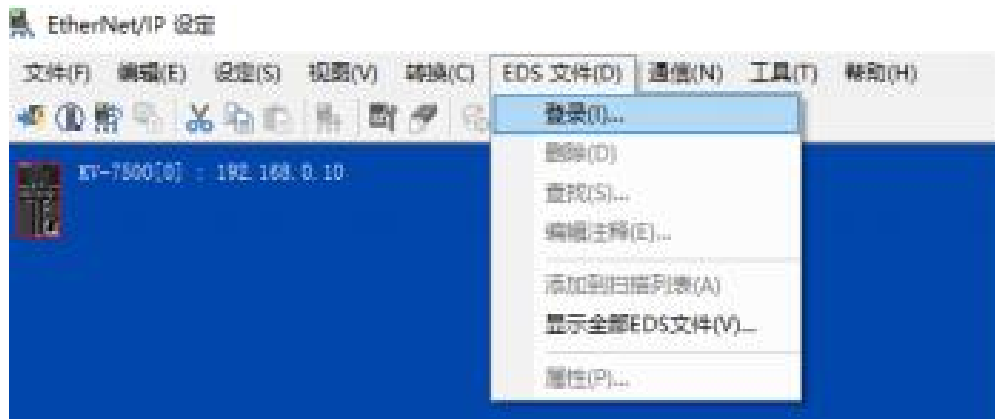
PLC

EtherNet/IP



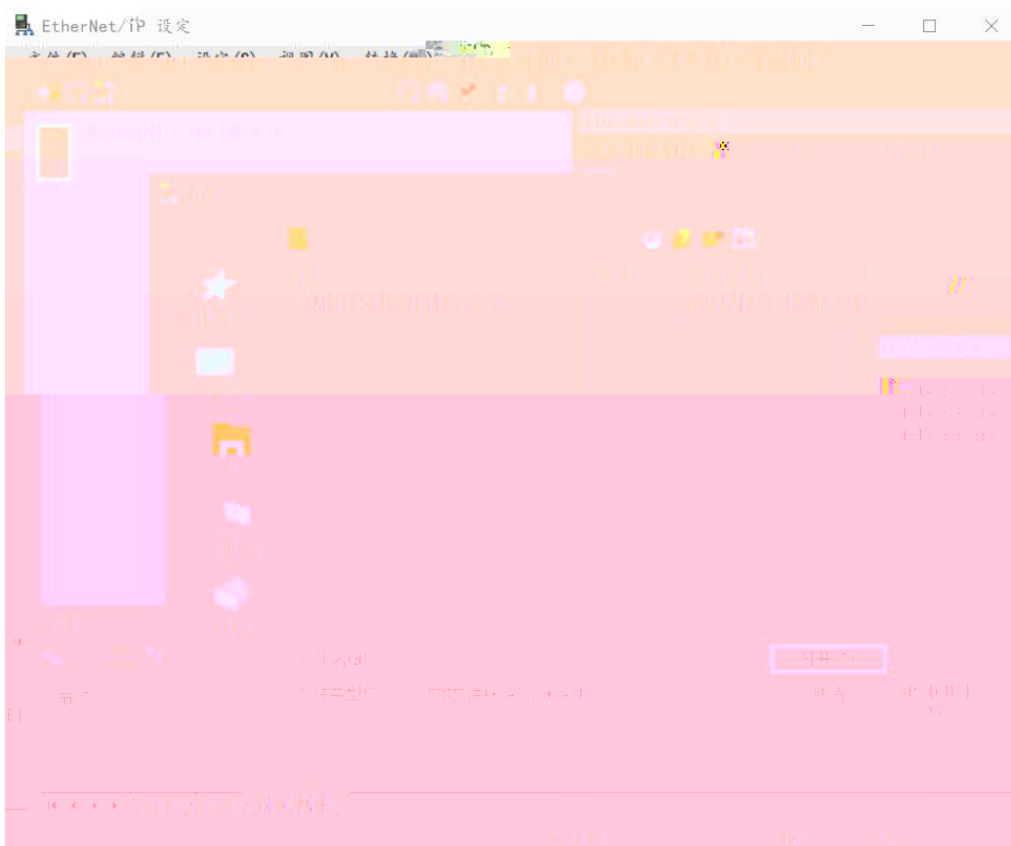
5.4 安 EDS 件

“EtherNet/IP ” “EDS ” “ ” “ ”



EDS

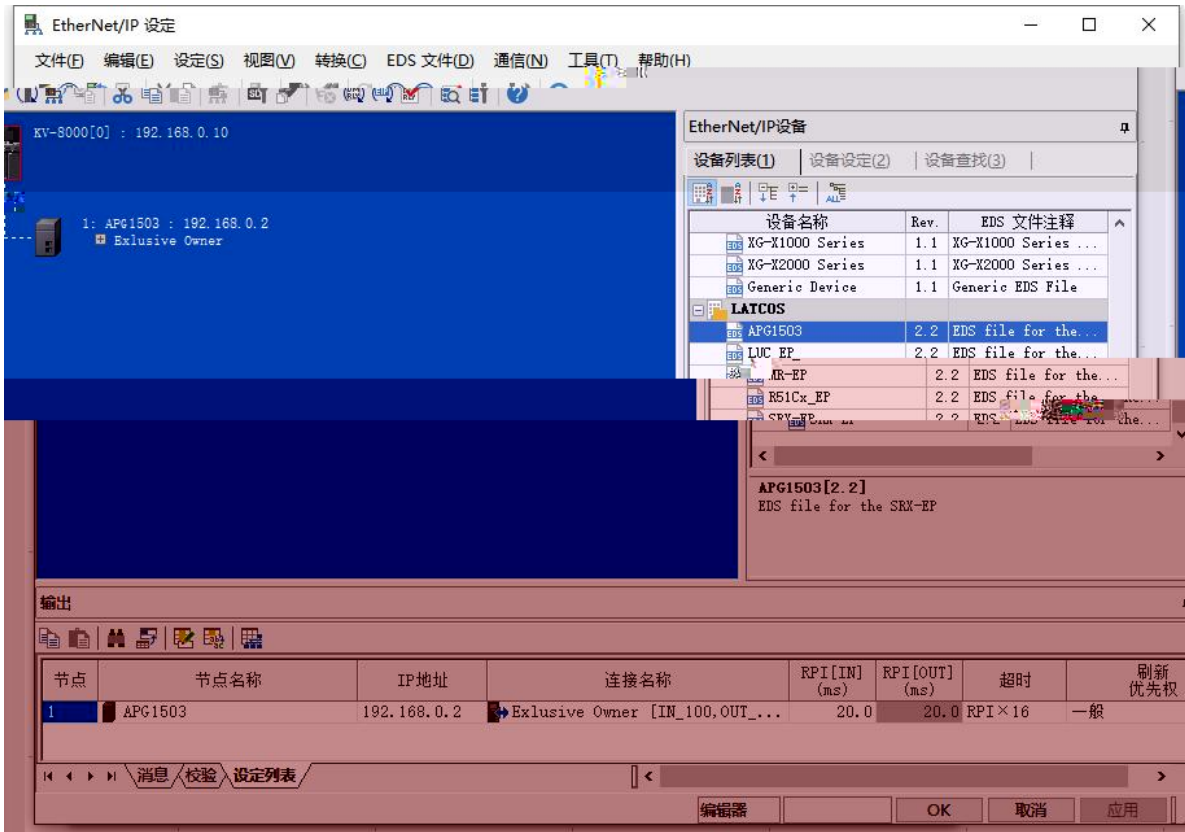
EDS



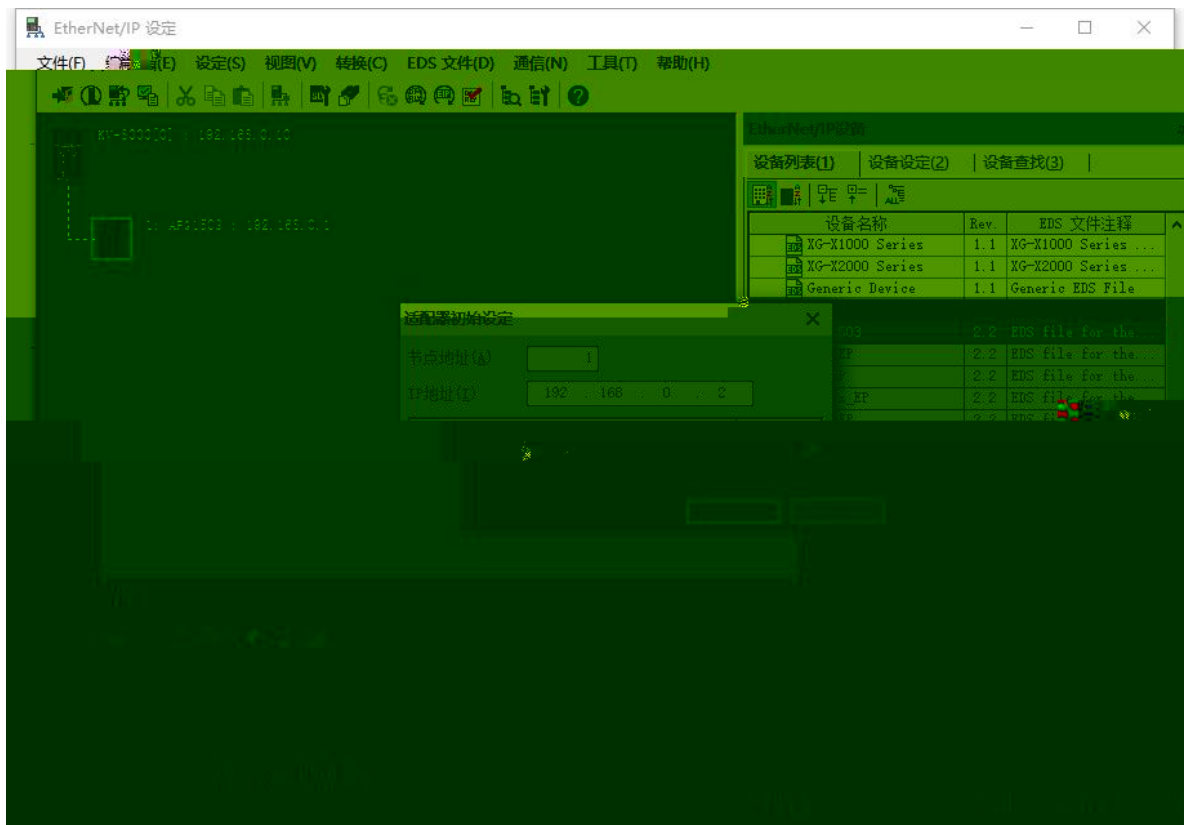
5.5

EtherNET/IP

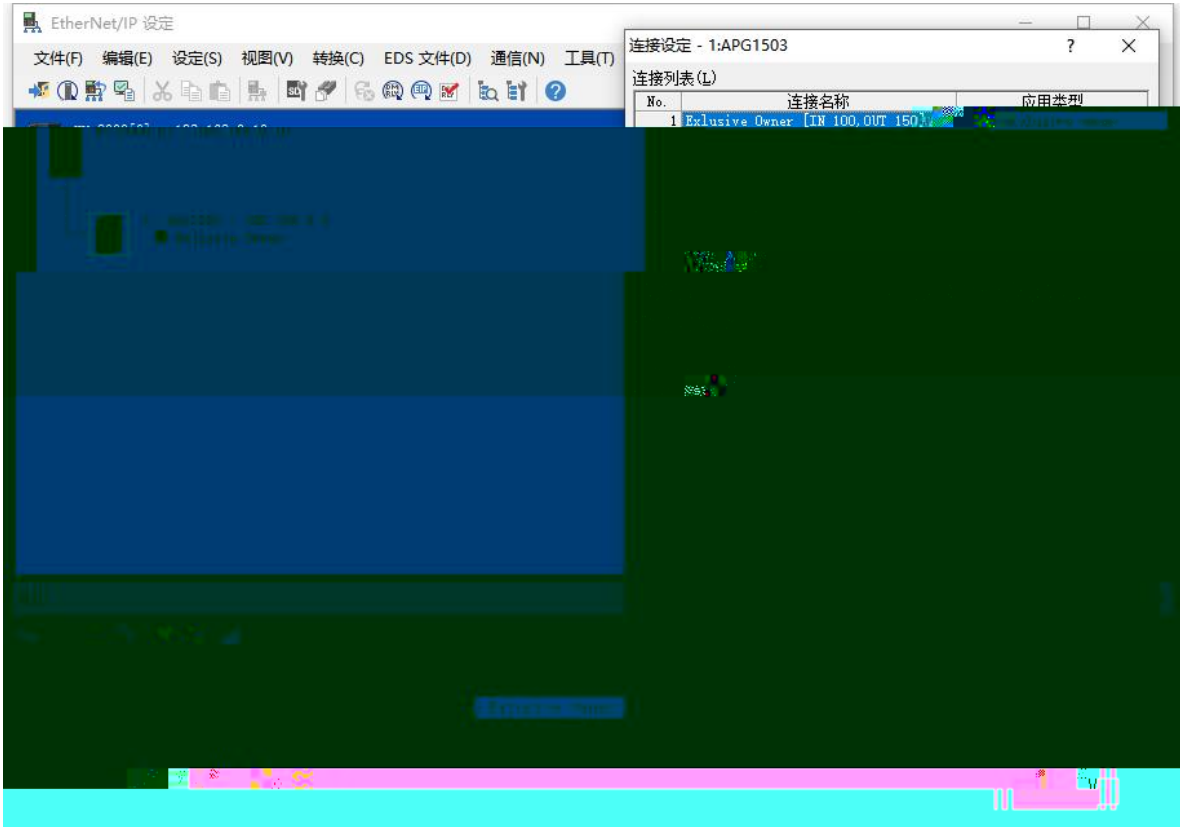
"APG 1503"



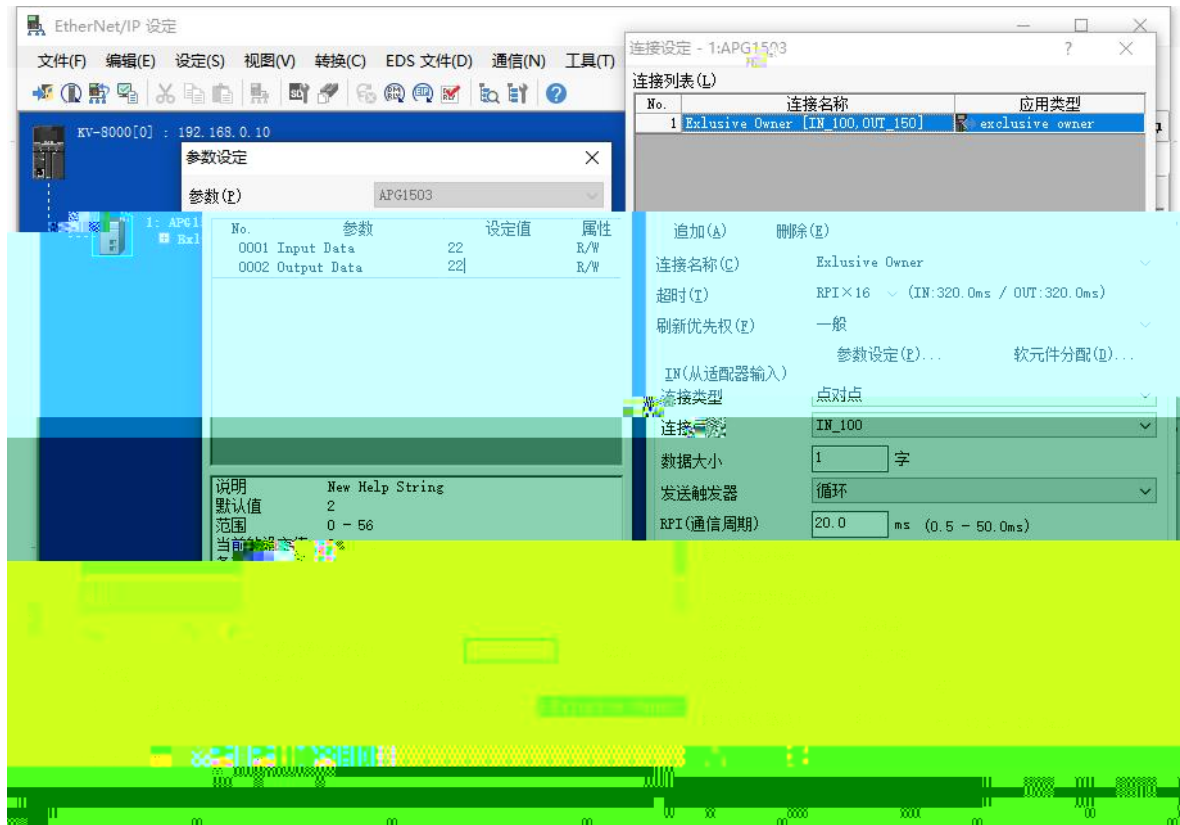
IP



"Exclusive Owner"



" "



a, Exclusive Owner

b,

c, RPI 5-30

Input Data Output Data 1 = 8

Ge-therQ1	从机地址	功能码	寄存器地址	数据长度	I. 地址	Q. 地址
ModbusConfig	1	03 读保持寄存器	0	10	3... 22	
dbusM+H+Hit	2	06 写单个寄存器	10	1		3... 4
	3	16 写多个寄存器	11	9		5... 22

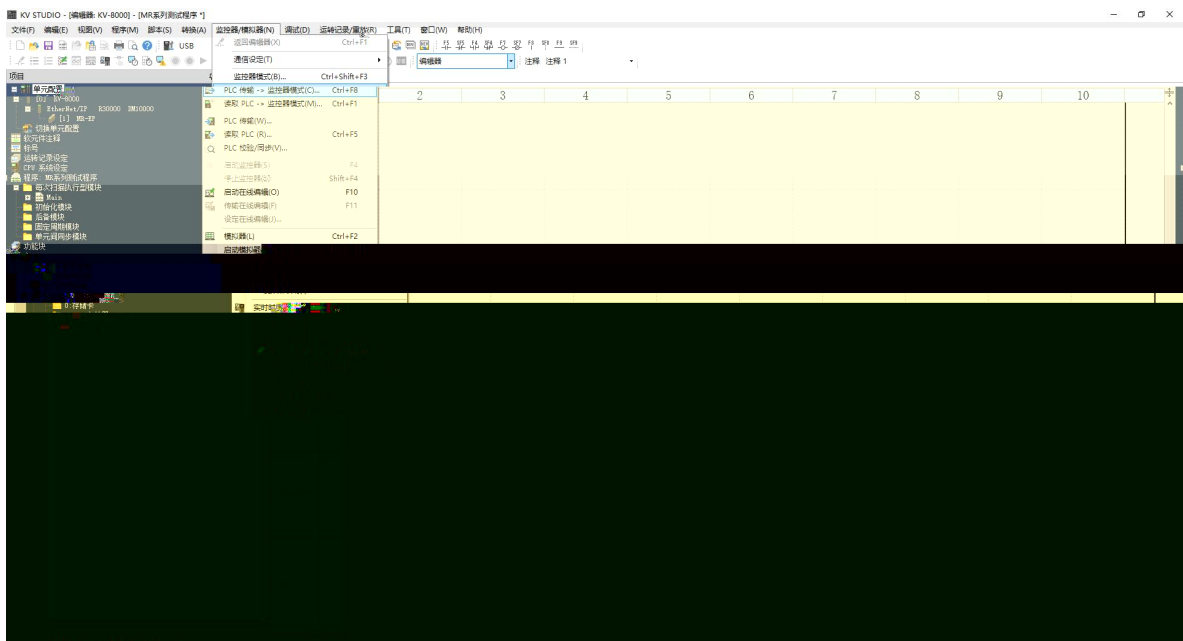
统计

总计槽数 3 输入数据总长度 22 (byte) 输出数据总长度 22 (byte) 包含: 状态寄存器

LA Econfig

PLC

plc



5.6 与 出

PLC

" " " "

6. 到 块

1.

windows

ping

IP

ping

ping

IP

IP

2

RUN

ERR

IP

IP

IP



凌科自动
LATCOS



凌 动化

公司 www.laticos.cn

0510-85888030

区 3 号华 创

7 号 701