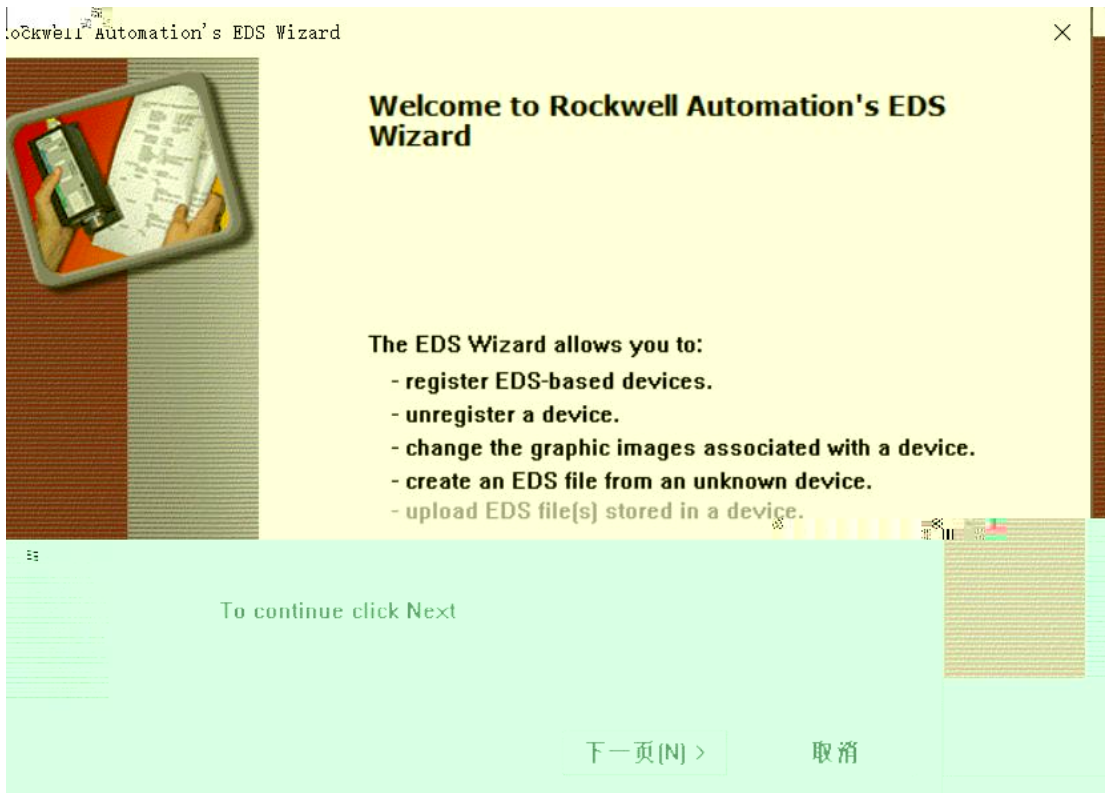
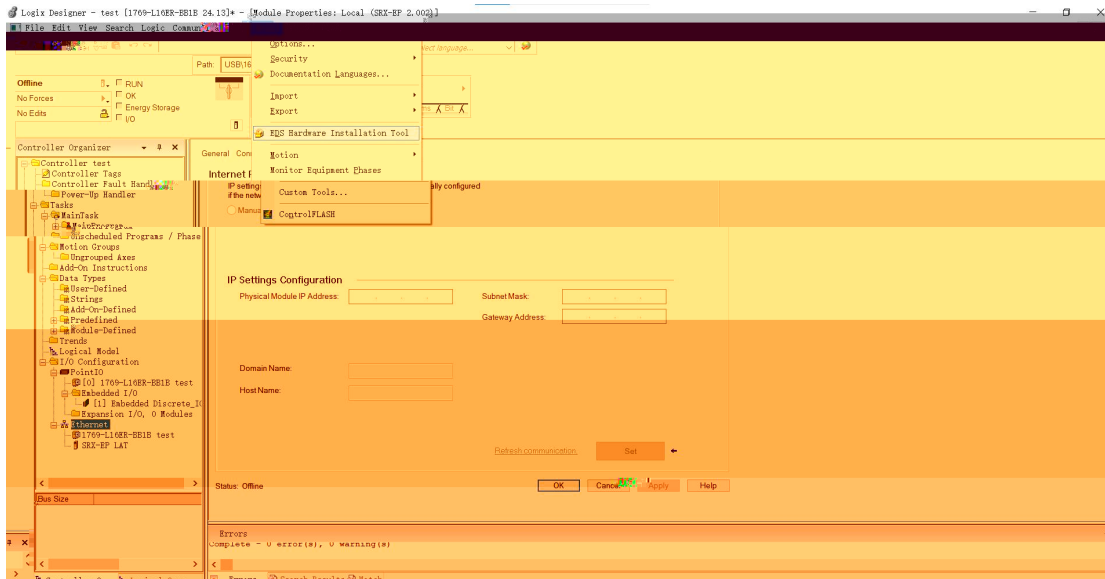

透科自动化





Options

What task do you want to complete?



Register an EDS file(s).
This option will add a device(s) to our database.



Deregister a device.
This option will remove a device that has been registered by an EDS file from our database.



Create an EDS file.
This option creates a new EDS file that allows our software to recognize your device.



Unregister EDS files from the database.
This option unregisters and registers the EDS files stored in the device.

< 上一步(B)

下一页(N) >

取消

Registration

Electronic Data Sheet file(s) will be added to your system or use in Rockwell Automation applications.



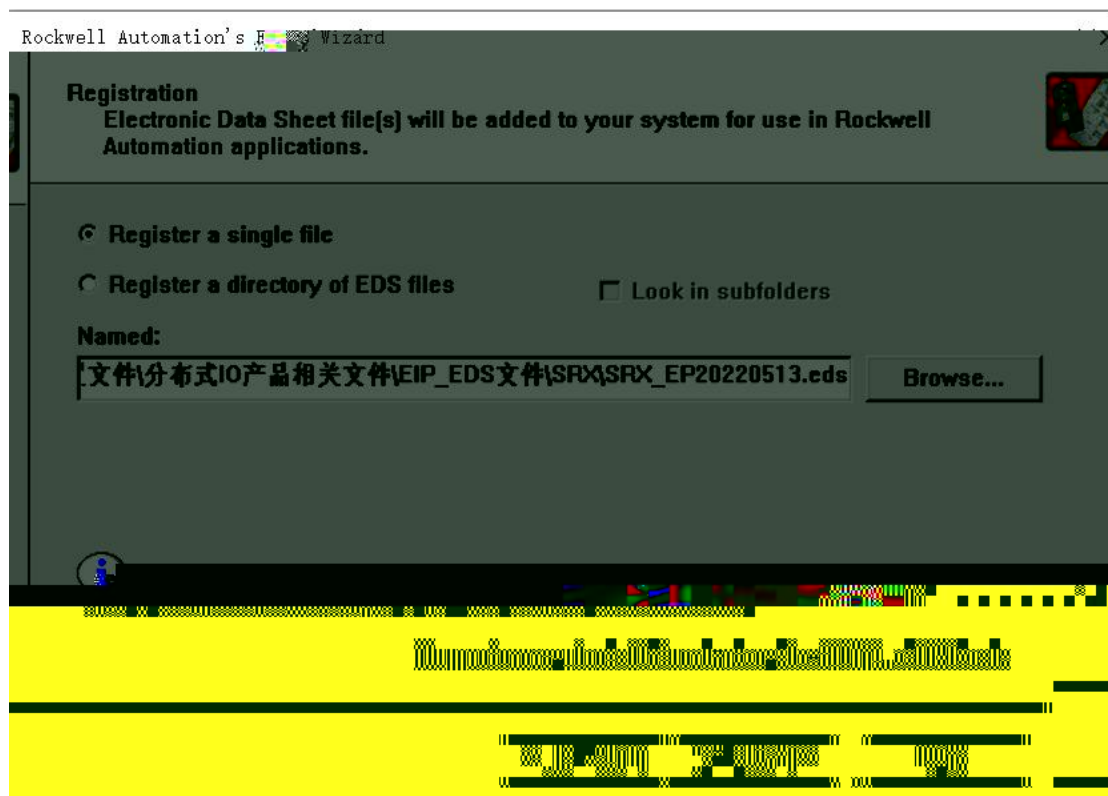
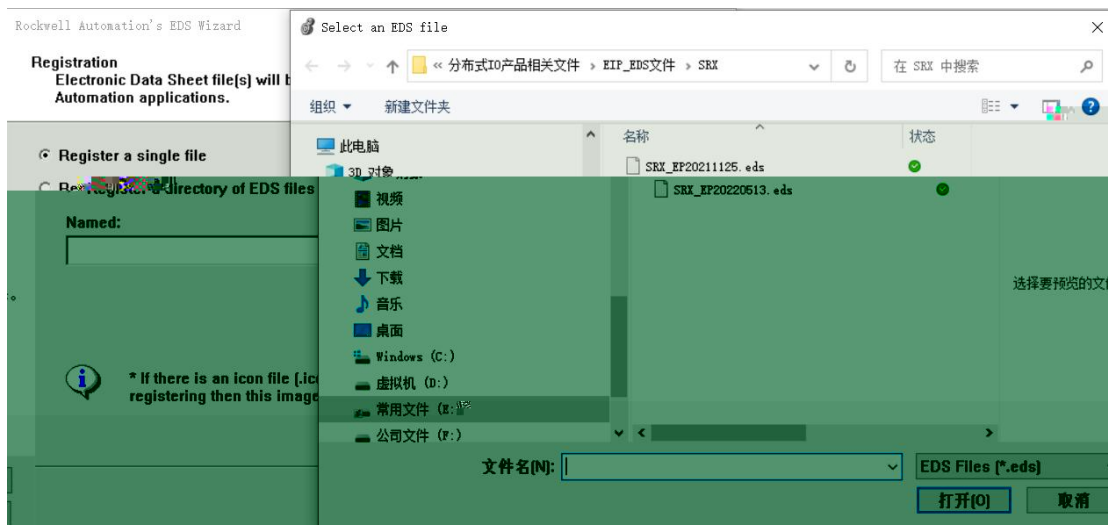
- Register a single file
- Register a directory of EDS files

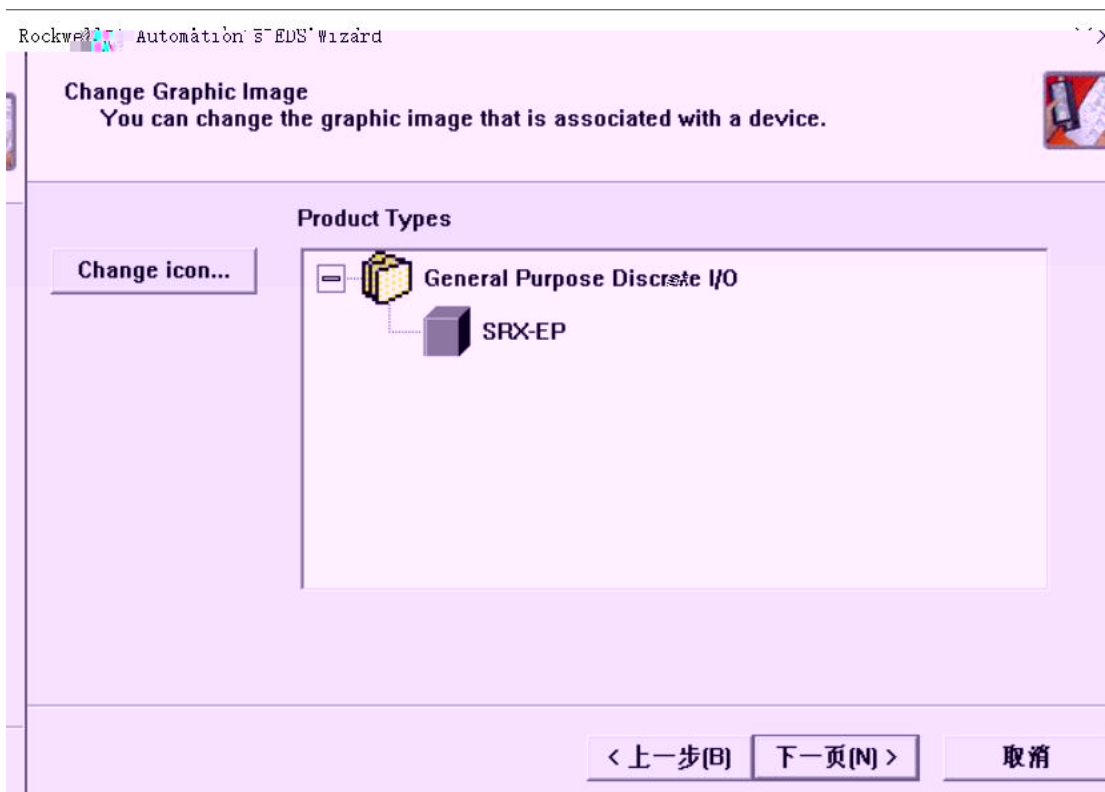
Named:

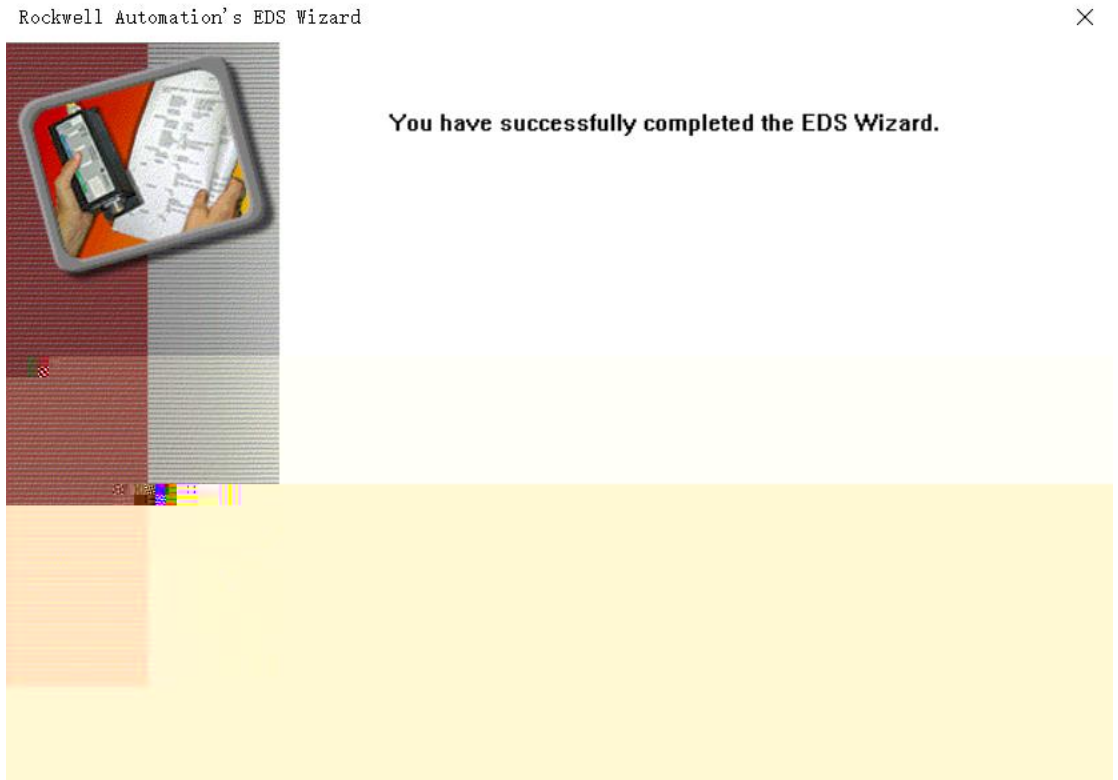
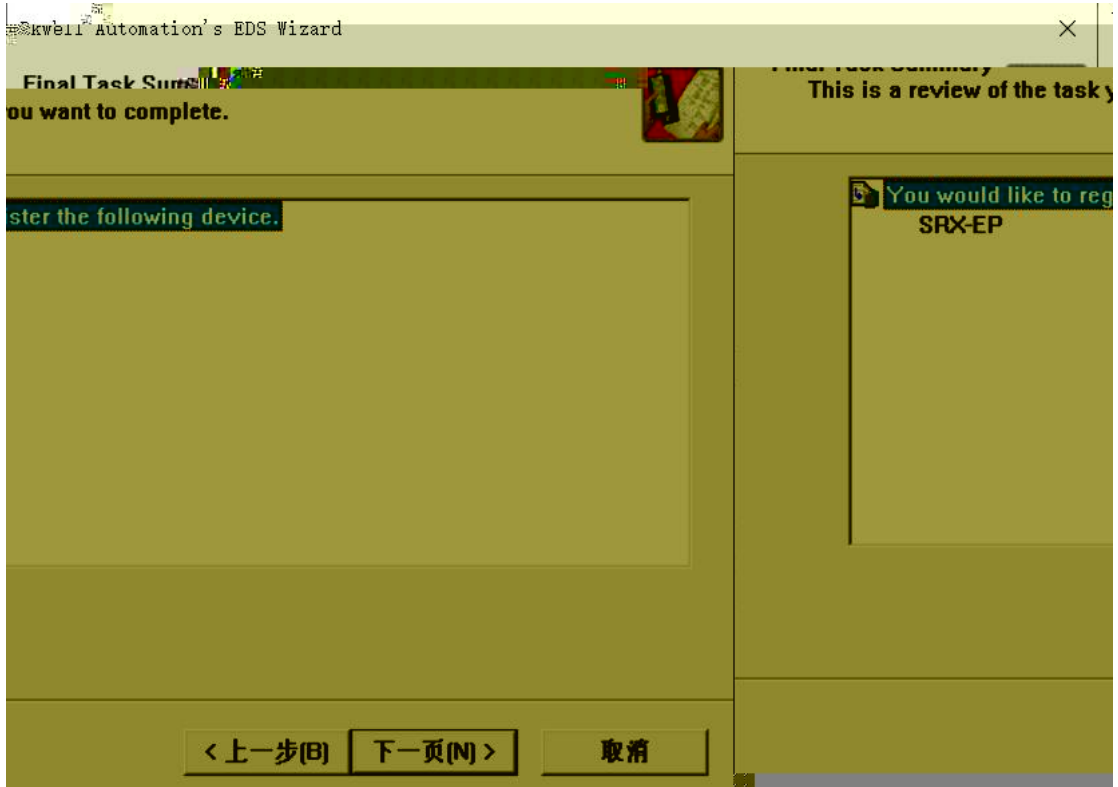
Browse...



* If there is an icon file (.ico) with the same name as the file(s) you are registering then this image will be associated with the device.







Select Module Type

Catalog Module Discovery Favorites

Enter Search Text for Module Type... Clear Filters Hide Filters

Module T... Module Ty...

- Analog
- CIP Motion Safety Drive Device
- Communication
- Communications Adapter
- Controller

- Allen-Bradley
- Endress+Hauser
- FANUC CORPORATION
- FANUC Robotics America
- LATCOS

Catalog Number	Description	Vendor	Category
0005_007B_0030	SP600...	Reliance...	DPI to EtherNet/IP...
0005_007B_0038	SP600 ER 400V	Reliance...	DPI to EtherNet/IP...
0005_007B_0039	SP600 ER 200V	Reliance...	DPI to EtherNet/IP...
0005_007B_003A	SP600 ER 600V	Reliance...	DPI to EtherNet/IP...
0005_007B_0060	Liquiflo 2.0	Reliance...	DPI to EtherNet/IP...
0005_007F_0027	MD60	Reliance...	MDI to EtherNet/IP...
0005_007F_0028	MD650	Reliance...	MDI to EtherNet/IP...

Select Module Type

Catalog Module Discovery Favorites

Enter Search Text for Module Type... Clear Filters Wide Filters

Module T... Module Ty...

- Analog
- CIP Motion Safety Drive Device
- Communication
- Communications Adapter
- Controller

- FANUC Robotics America...
- LATCOS
- Mettler-Toledo
- Online Development Inc. (Automat...
- Parker Hannifin Corporation

Catalog Number	Description	Vendor	Category
SRX-EP	SRX-EP	LATCOS	General Purpose Di...

1 of 395 Module Types Found

new module

Select Module Type

Catalog Module Discovery Favorites

Enter Search Text for Module Type...

Module T... Module Ty...

- Analog
- CIP Motion Safety Drive Device
- Communication
- Communications Adapter
- Controller

- FANUC Robotics America...
- LATCOS
- Mettler-Toledo
- Online Development Inc. (Automat...
- Parker Hannifin Corporation

Catalog Number	Description	Vendor	Category
SRX-EP	SRX-EP	LATCOS	General Purpose Di...

General Connection Module Info Internet Protocol

Type: SRX-EP SRX-EP

Vendor: LATCOS

Parent: Local

Name:

Description:

Ethernet Address

Private Netw 192.168.1.

IP Address:

Host Name:

Module Definition

Revision: 2002

Electronic Keying: Compatible Module

Connections: Exclusive Owner

1 of 395 M

Close or

Change...

Status: Creating

OK Cancel Help





凌科自动
LATCDS

