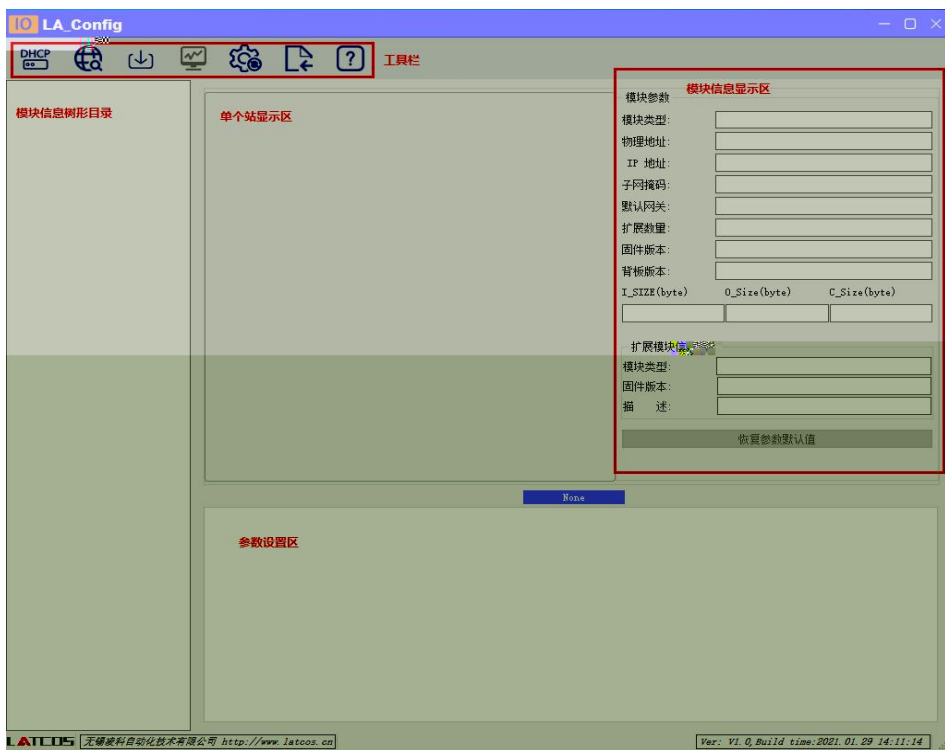


透科自动化





						
DHCP 服务	扫描 模块	下载 参数	监控	参数	描述文 件导入	帮助





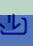




✕

IP地址范围: —

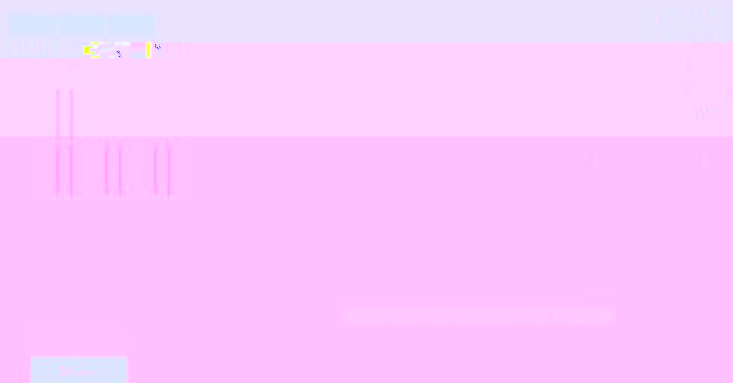
0%



IO LA_Config
— □ ✕









简体中文 ▾

SRX-EP(192.168.0.2)
模块管理



1/21 | 100%

DHCP [X]

	MAC	IP	状态	
1	7C : BA : CC : 11 : 00 : 56	192 . 168 . 0 . 4	未分配	添加MAC 删除MAC 启动服务 关闭服务 加载配置 保存配置

DHCP 启动单自模块申请被分配新的IP地址

信息栏 [X]



DHCP [X]

	MAC	IP	状态	
1	7C : BA : CC : 11 : 00 : 5B	192 . 168 . 0 . 3	分配成功	添加MAC 删除MAC 启动服务 关闭服务 加载配置 保存配置

DHCP 启动单自模块申请被分配新的IP地址

信息栏 [X]

```
[04-Feb-21 13:58:14] Listening On: 192.168.0.153
[04-Feb-21 13:58:17] DHCPDISCOVER for 7c:ba:cc:11:00:5b () from interface
```



Window with a blue header and a close button (X). Below the header is a table with the following columns: mac, IP地址, 子网掩码, 默认网关, 模块名称, 状态.

mac	IP地址	子网掩码	默认网关	模块名称	状态
-----	------	------	------	------	----

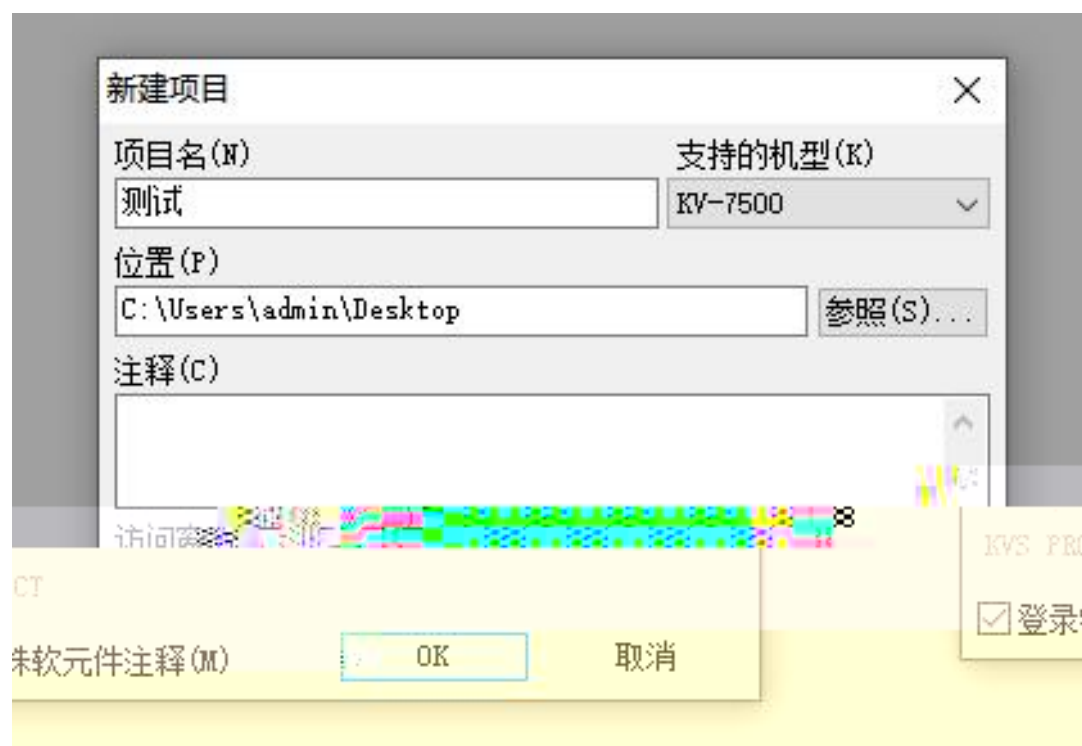
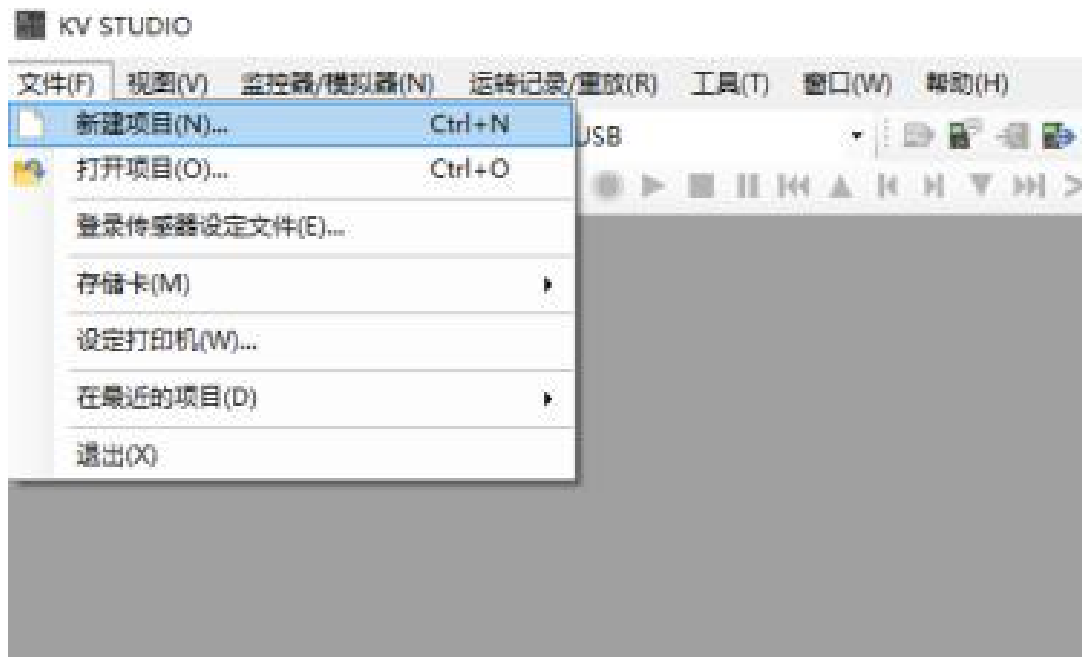
Below the table are several controls: 扫描时间 5 :S, 全局扫描, 修改IP, 恢复出厂设置, 重启模块.

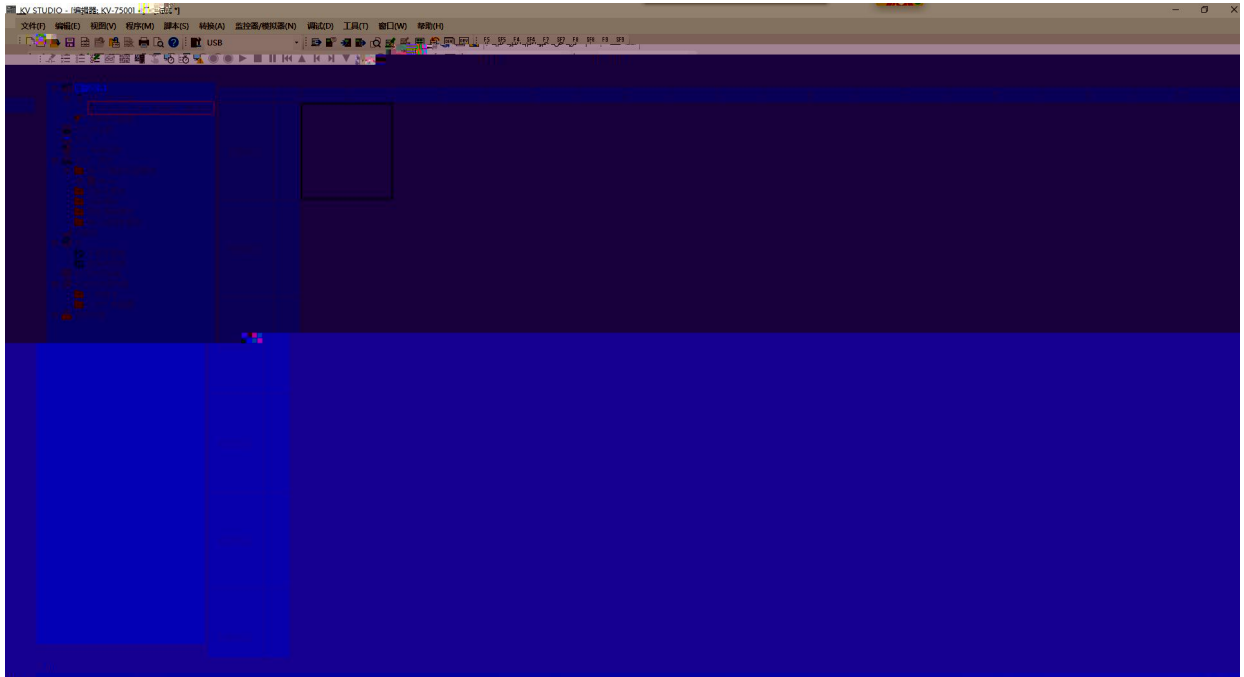
Window with a blue header and a close button (X). Below the header is a table with the following columns: mac, IP地址, 子网掩码, 默认网关, 模块名称, 状态.

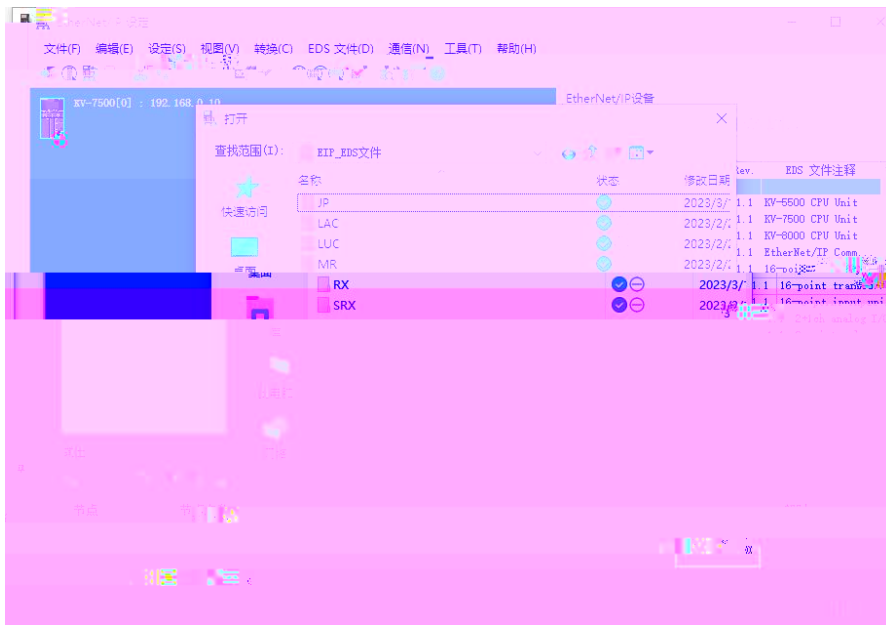
mac	IP地址	子网掩码	默认网关	模块名称	状态
12:34:56:78:9A:BC	192.168.0.3	255.255.255.0	192.168.0.1	模块名称	就绪

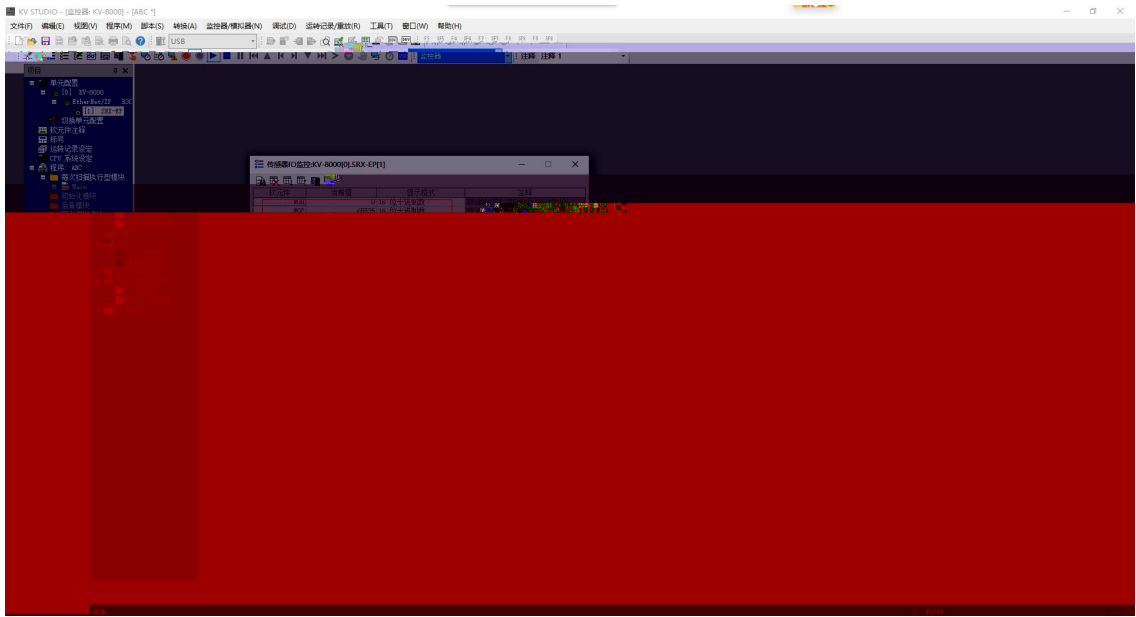
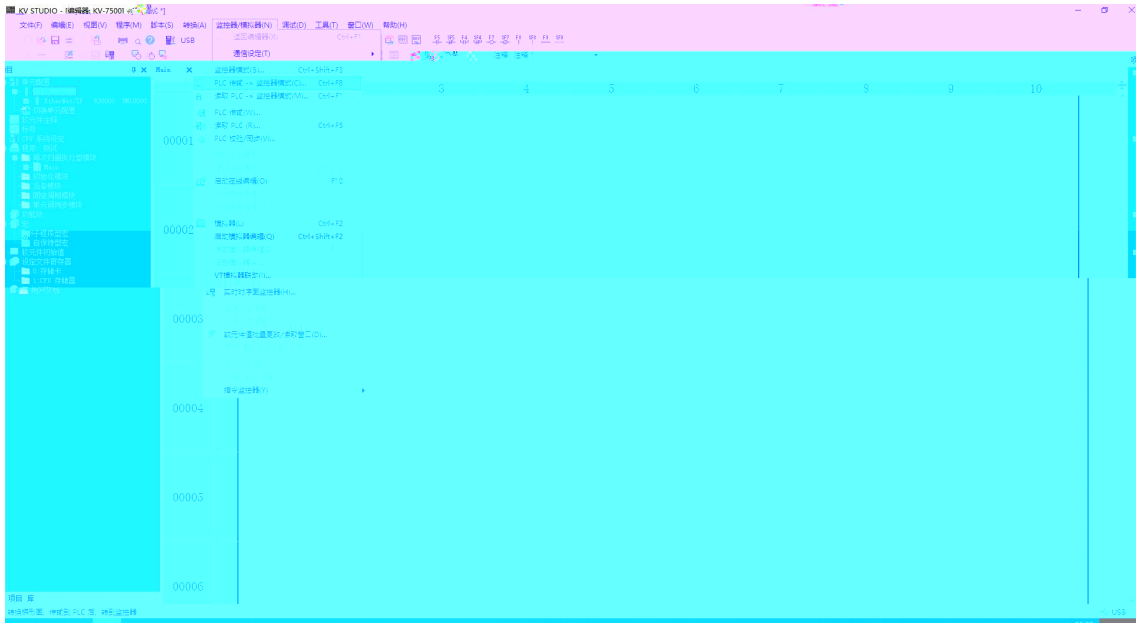
Below the table are several controls: 扫描时间 5 :S, 全局扫描, 修改IP, 恢复出厂设置, 重启模块.

扫描进行中  100%











读科自动
LATICOS

