

凌科自动化

User Manual



ETHERNET/IP
MODBUS RTU
APG 1503

RS485





1

ETHERNET/IP

2

10/100 Mbaud

3

RJ45

IEEE 802.xx

4

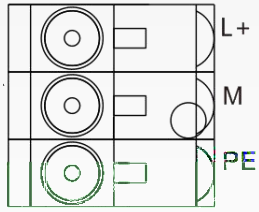
MAC (.(.(

5

6

(m"





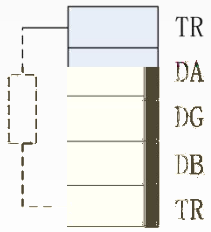
1	L	24V
2	M	
3	PE	

X1P2, RJ45 X1P1
 LED 3 Modbus mac
 3 ETHERNET/IP

PWR			
ALM		Modbus	
RX		Modbus	
TX		Modbus	
RY		operate	
MT		LED	
SF		---	
ER		ETHERNET/IP	

Mobus 120R TR
 TR1 DA, TR2 DB

4



1	TR1	
2	DA	/ A
3	DG	
4	DB	/ B
5	TR2	



status

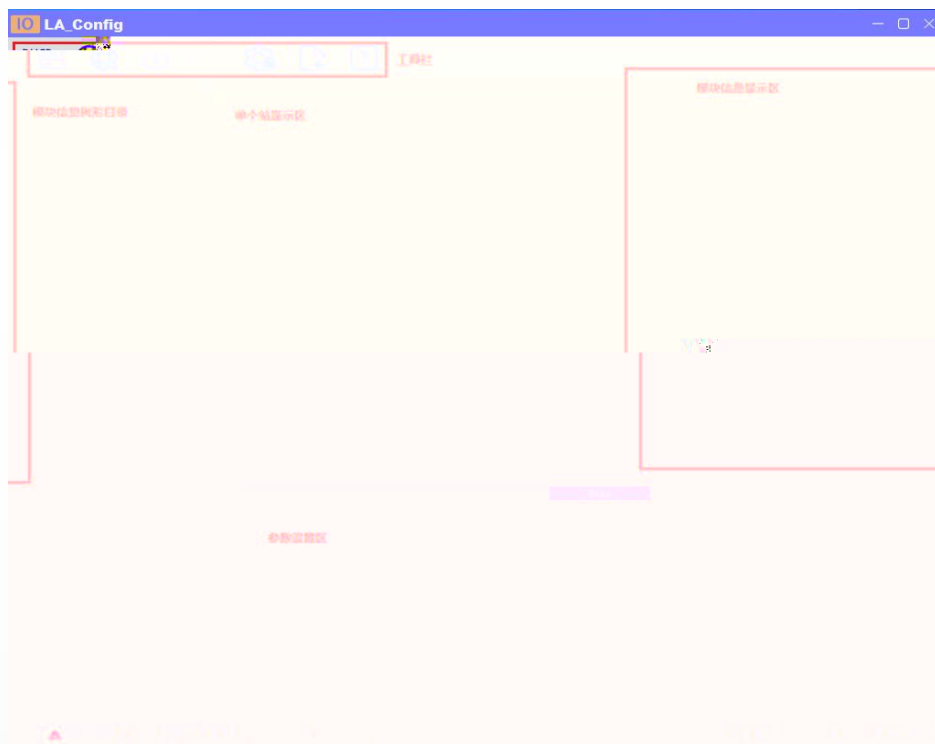
control

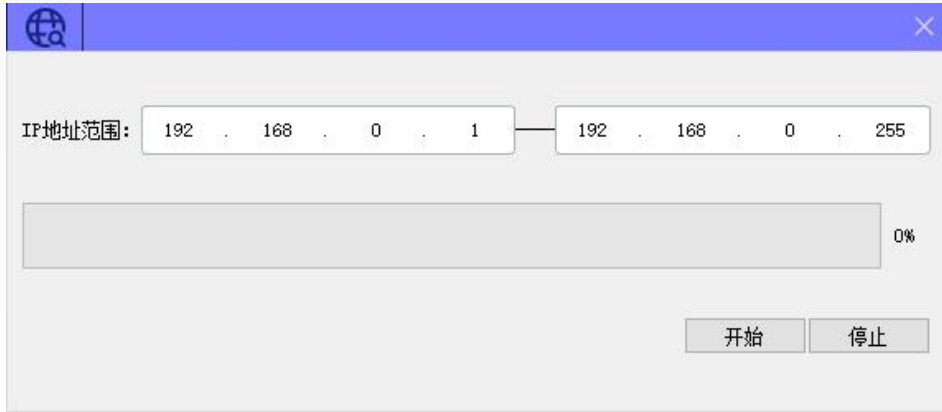
			/



“LAEConfig” LAEConfig

WIN10







DHCPService

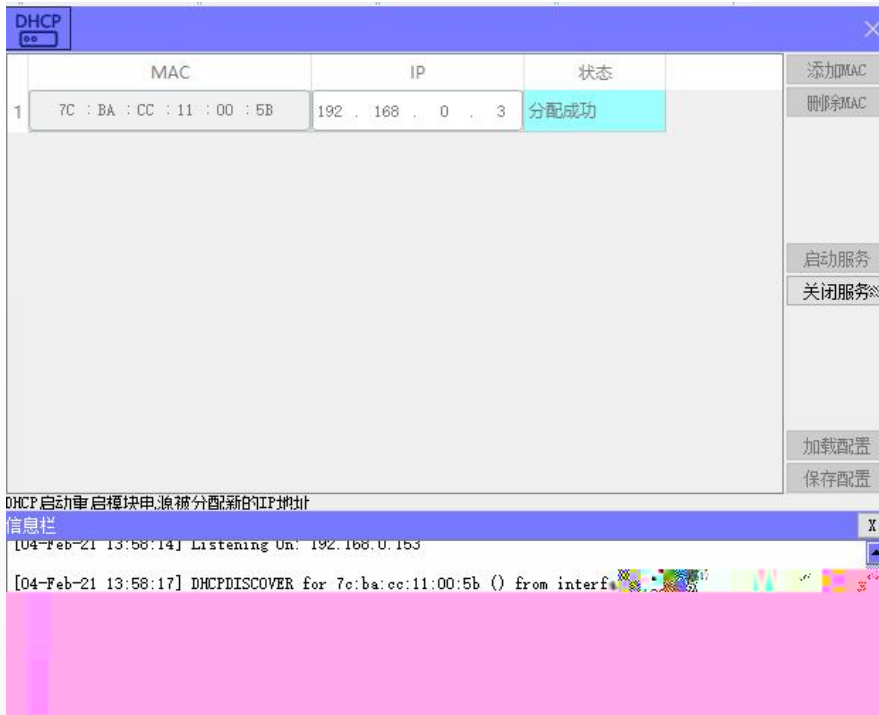
" MAC "

MAC "

MAC

IP

IP



" "



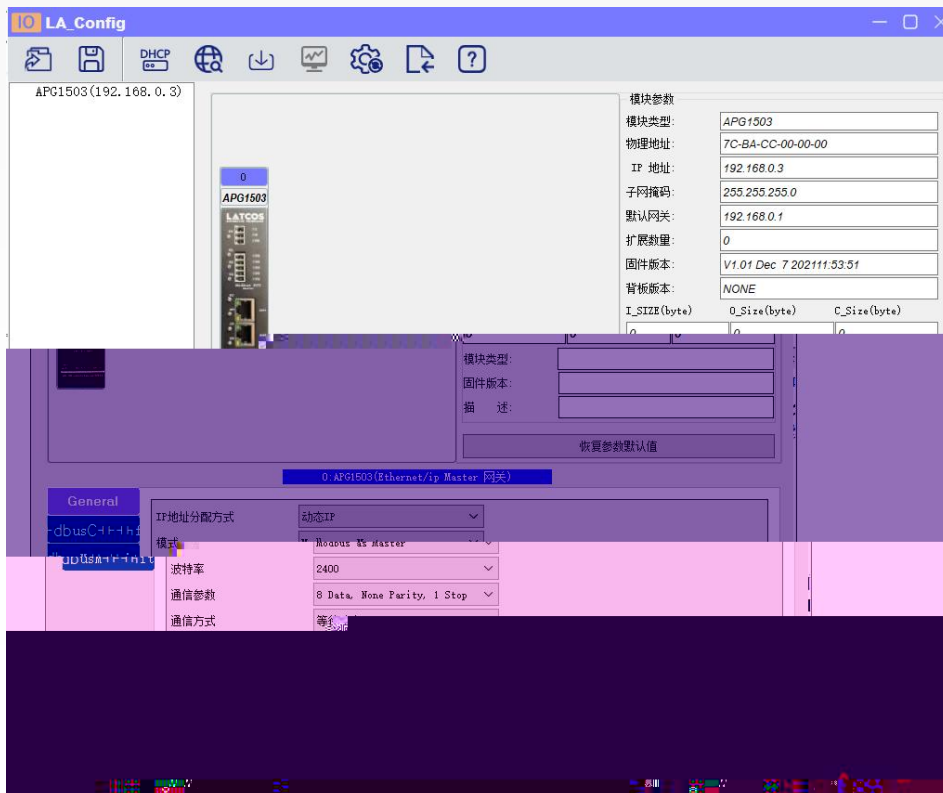
IP

" IP"

IP

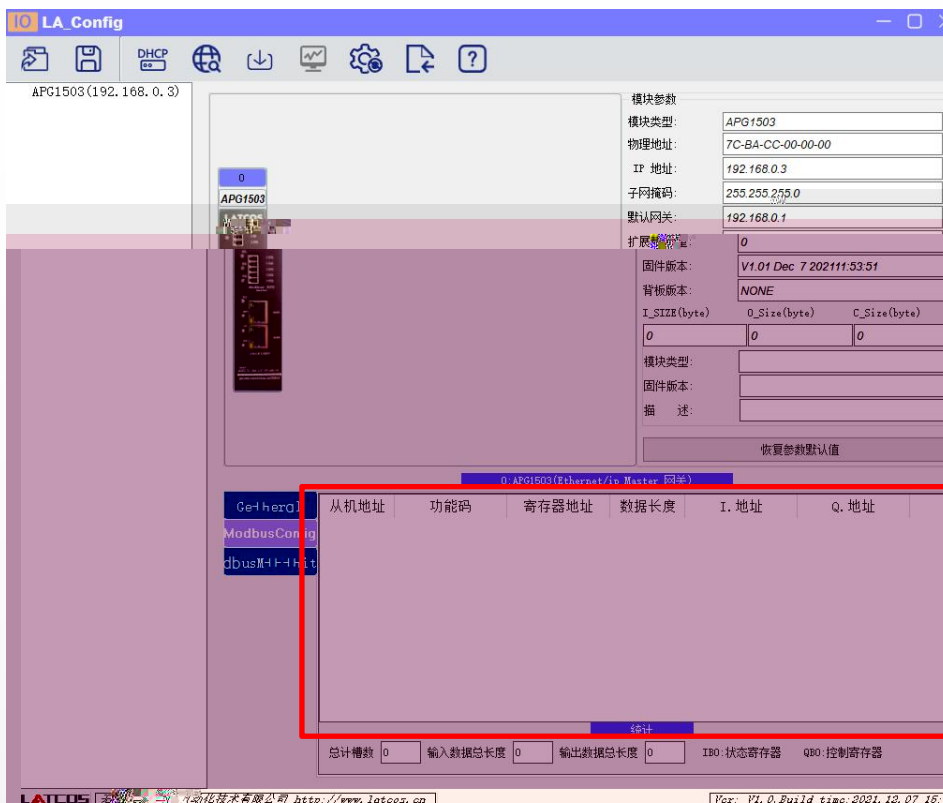
1 modbus master

modbus



2.

modbus config

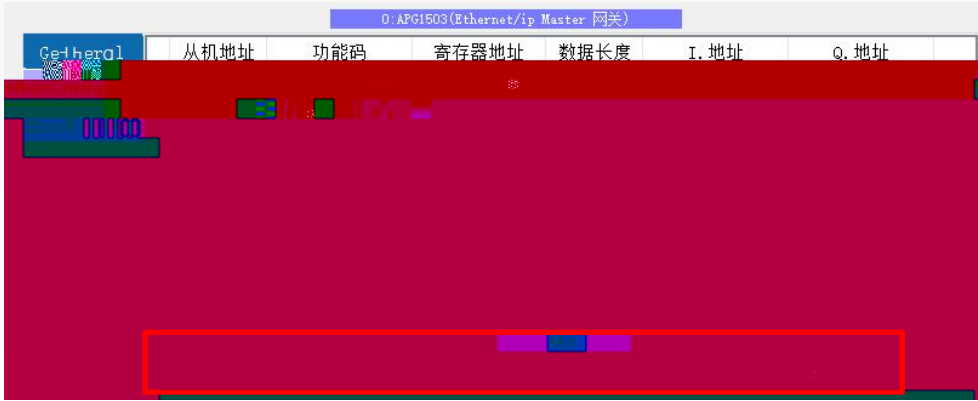


3.

" " modbus

增加
删除

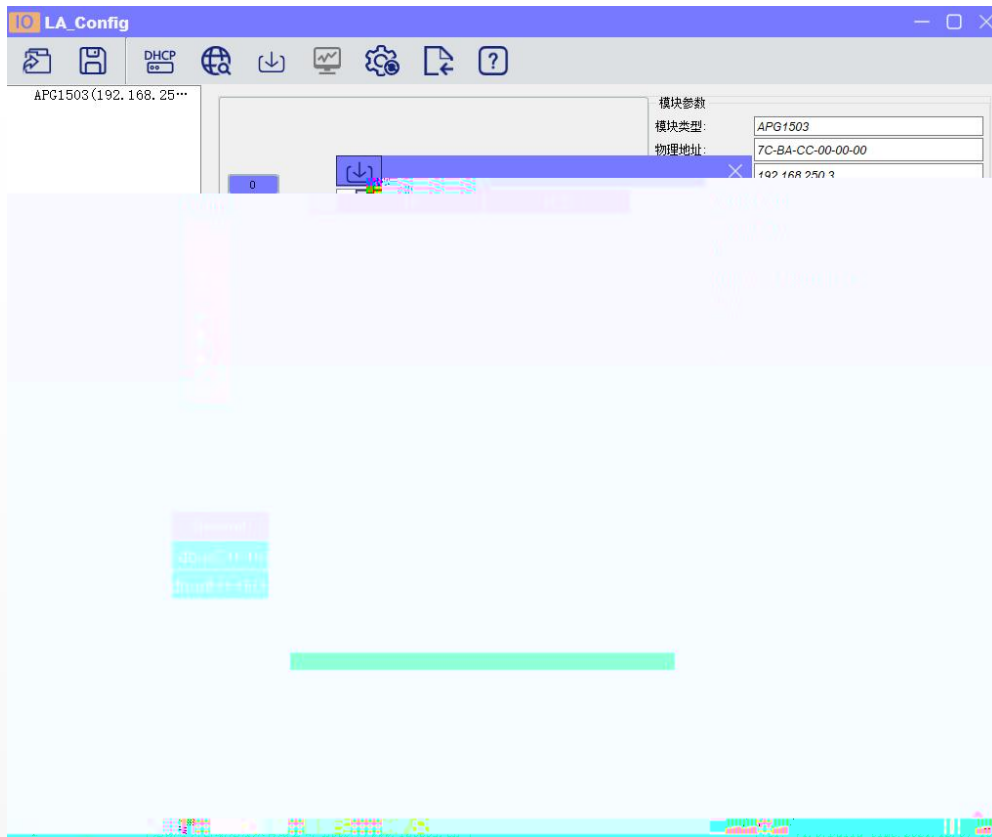
" " modbus

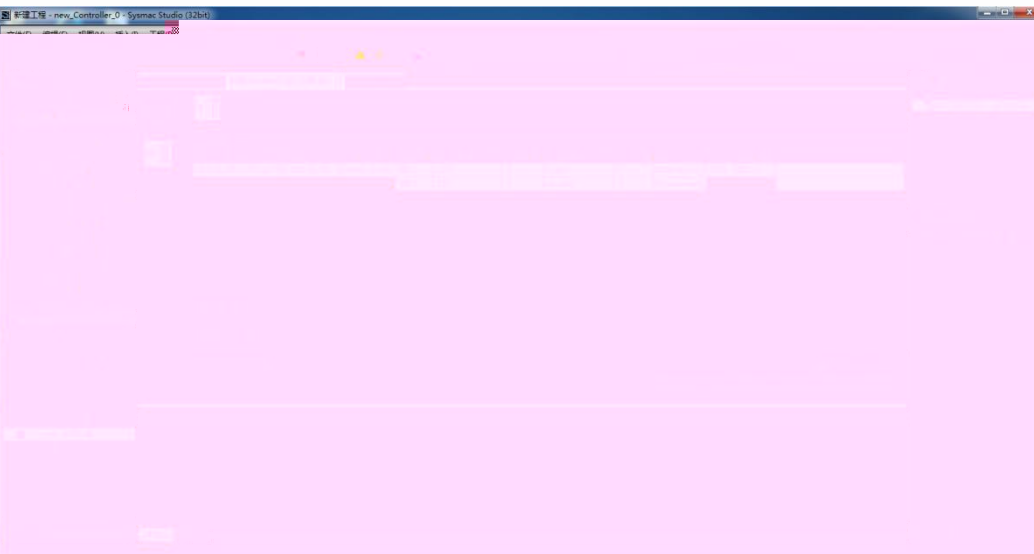
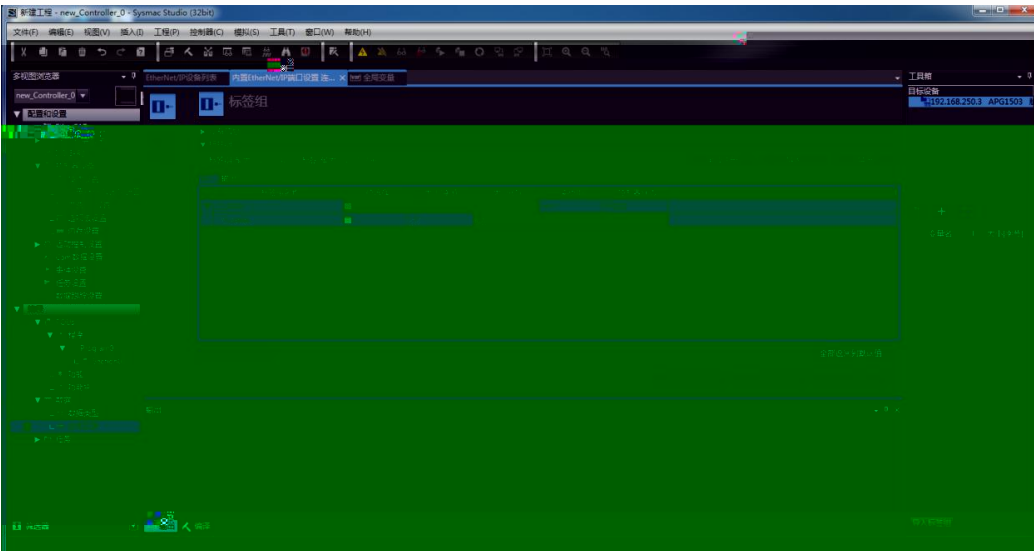
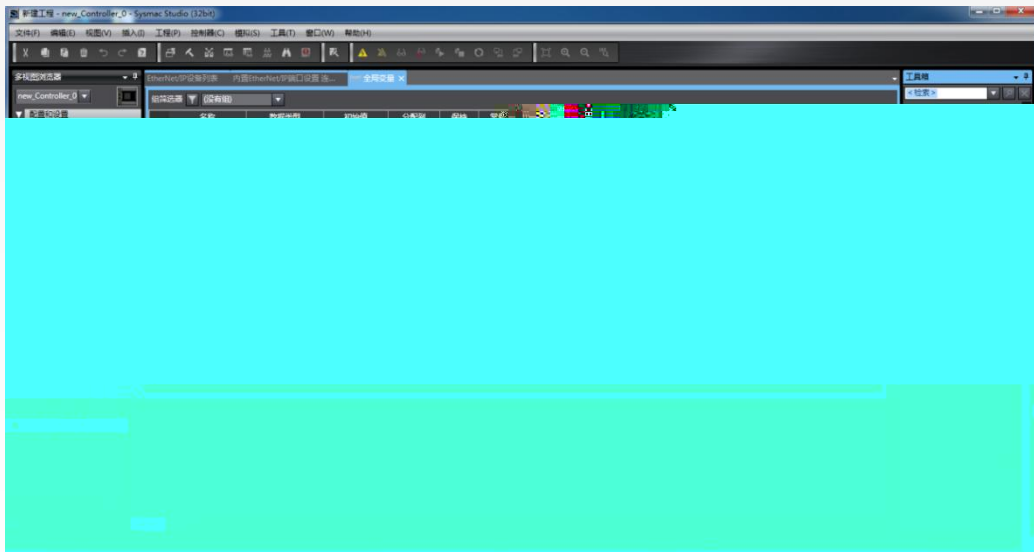


modbus

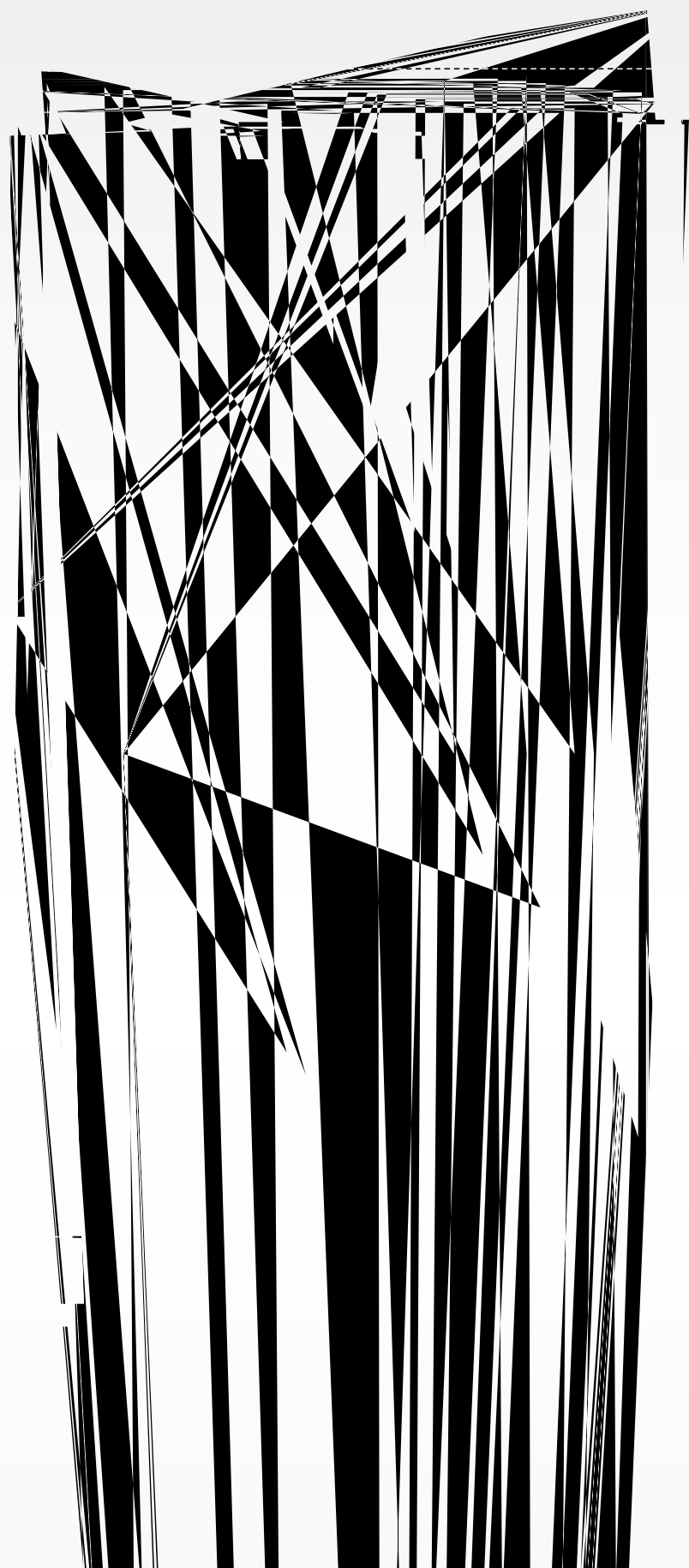
PLC

4.





in_data(0)		
in_data(1)	1	
in_data(2)		
out_data(0)		
out_data(1)	1	
out_data(2)		
out_data(3)	2	
out_data(4)		



THE BVA