

透科自动化

Ethernet/IP MR KV8000



2023-3-23

2023 03 23

20223 03 23

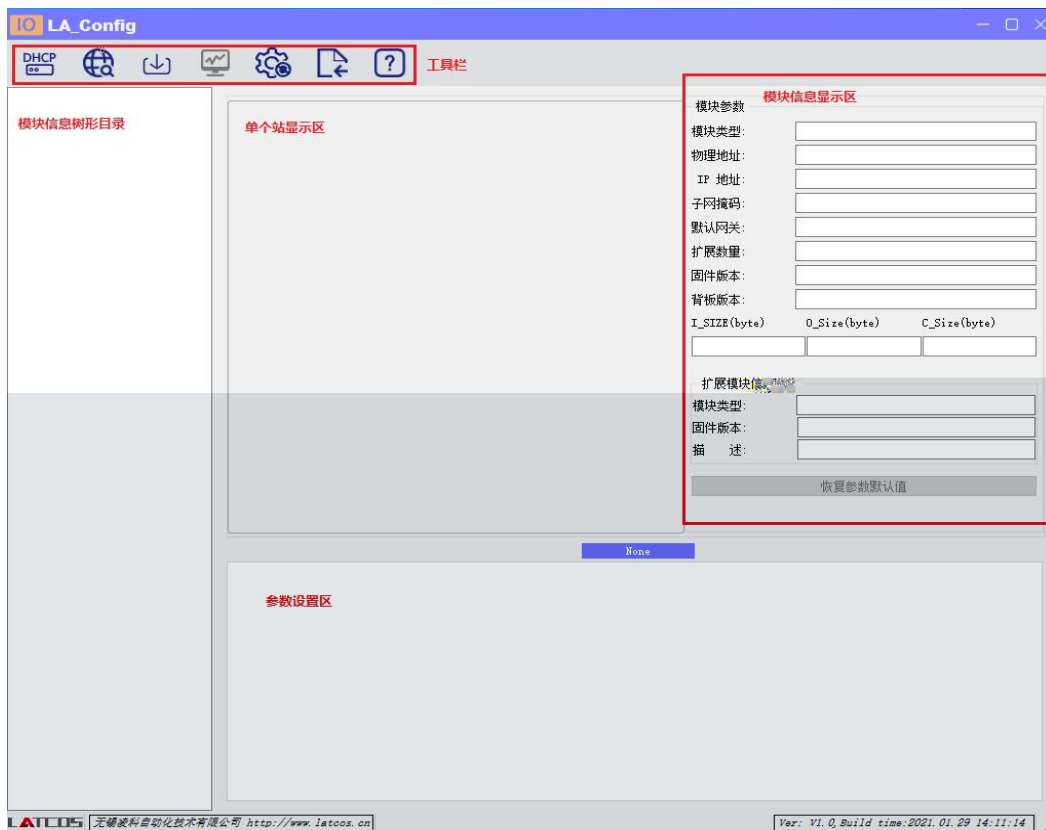
KV STUDIO Ver.10G

KV8000 Ethernet/IP IO KV STUDIO Ver.10G
IO .eds IO


- KV STUDIO Ver.10G
- IO MR_EP20221128.eds

1. KV8000 IO
2. PLC Ethernet IO

LAEConfig IP IP 192.168.0.x



						
DHCP 服务	扫描 模块	下载 参数	监控	参数	描述文 件导入	帮助


✕

IP地址范围: —

0%





IP

IP

IP

IO LA_Config
— □ ✕




IP地址范围: 192 . 168 . 0 . 1 — 192 . 168 . 0 . 255

0%

1

"IP"

IP"

DHCP 启动单 启模块申,源被分配新的IP地址

	MAC	IP	状态
1	7C : BA : CC : 11 : 00 : 56	192 . 168 . 0 . 4	未分配

添加MAC
删除MAC
启动服务
关闭服务
加载配置
保存配置

信息栏



DHCPService

" MAC" " MAC"

MAC

IP

" "

IP

DHCP 启动单 启模块申,源被分配新的IP地址

	MAC	IP	状态
1	7C : BA : CC : 11 : 00 : 5B	192 . 168 . 0 . 3	分配成功

添加MAC
删除MAC
启动服务
关闭服务
加载配置
保存配置

信息栏

```
[04-Feb-21 13:58:14] Listening On: 192.168.0.153  
[04-Feb-21 13:58:17] DHCPDISCOVER for 7c:ba:cc:11:00:5b () from interface
```

" "



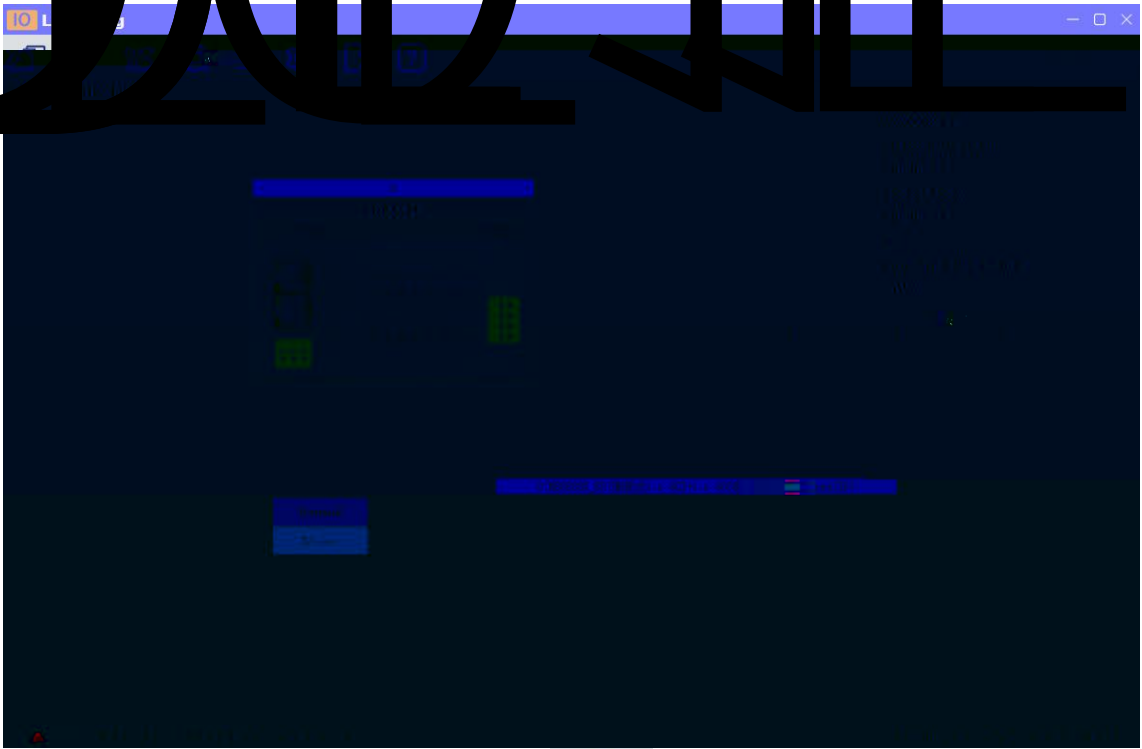
mac	IP地址	子网掩码	默认网关	模块名称	状态
-----	------	------	------	------	----

扫描时间 5 :S

全局扫描 修改IP 恢复出厂设置 重启模块

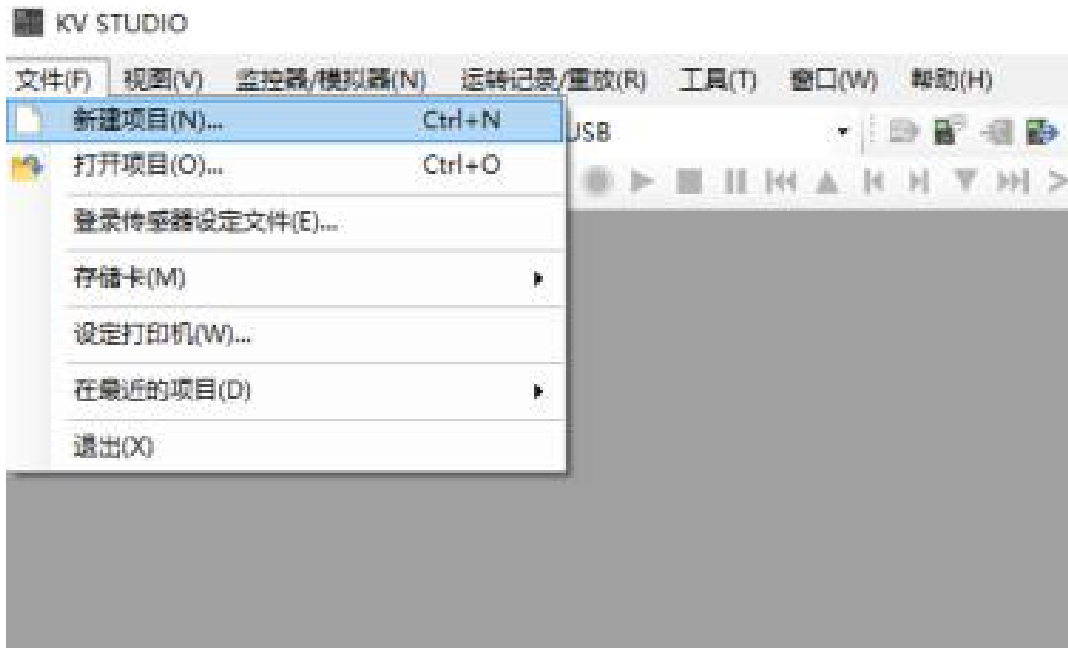
mac	IP地址	子网掩码	默认网关	模块名称	状态
-----	------	------	------	------	----

IP " IP IP

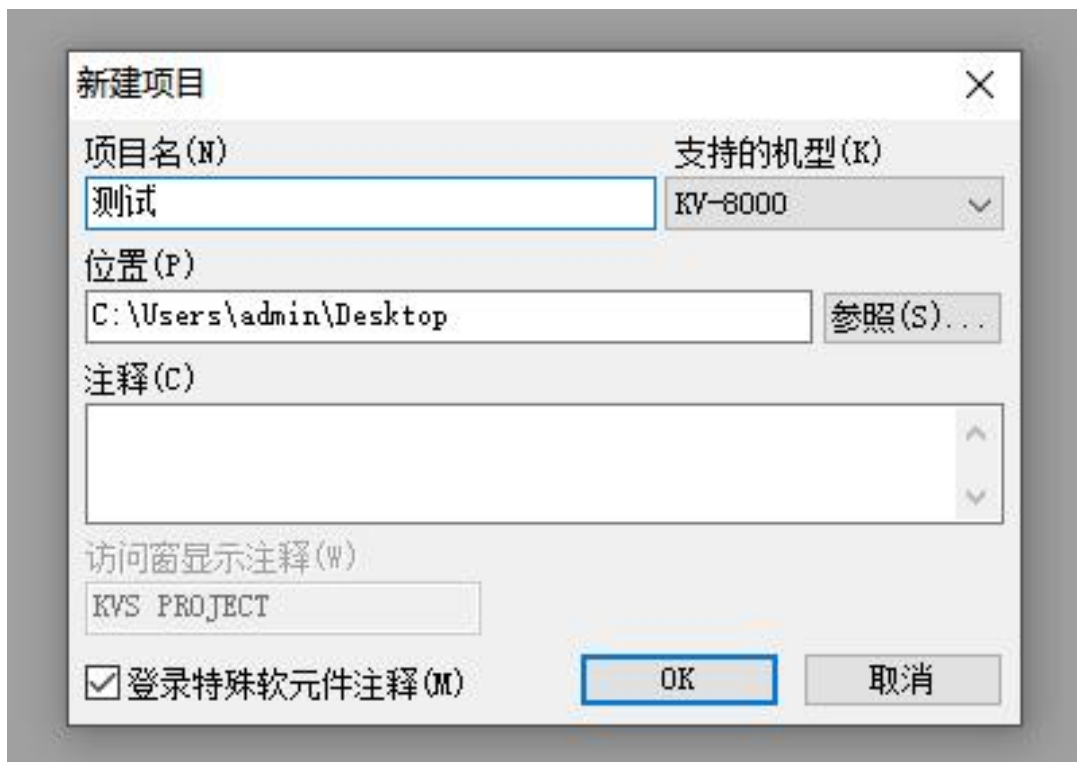


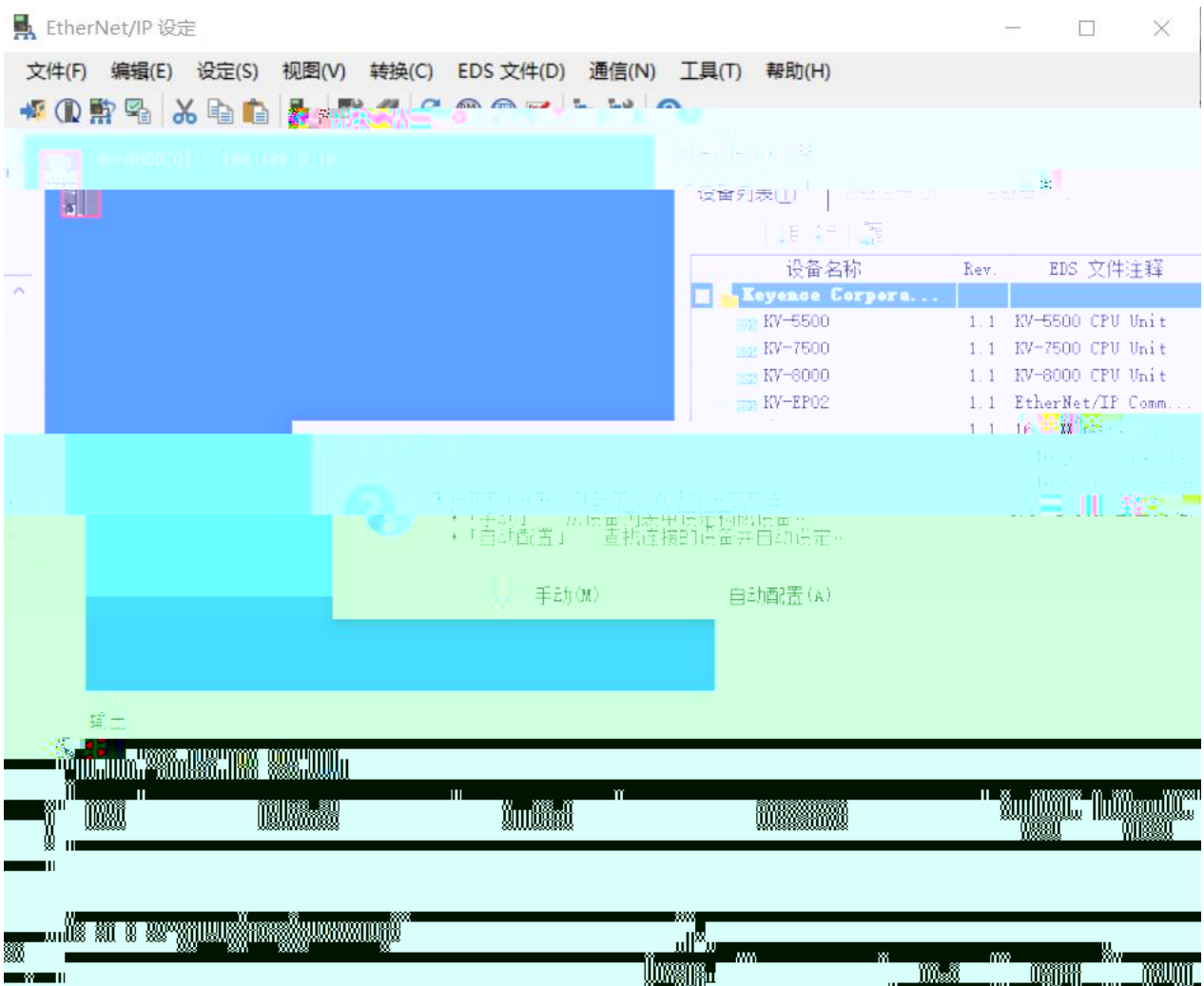
/

KV STUDIO



PLC



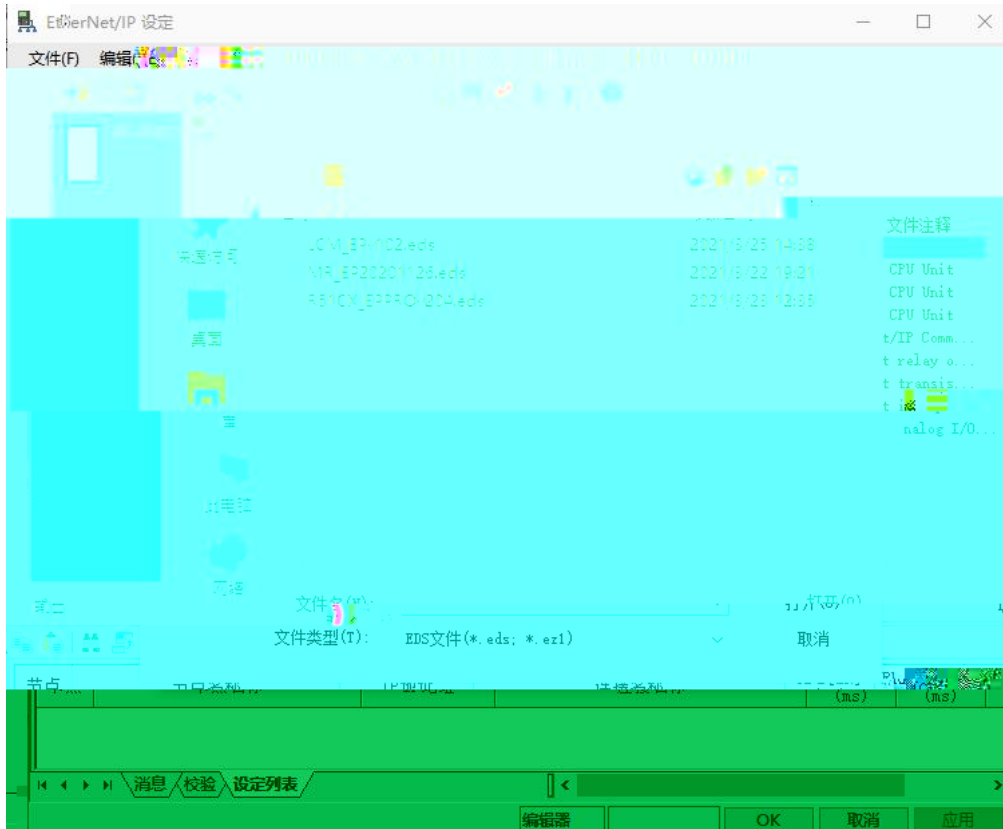


“EtherNet/IP” “EDS” “ ” “ ”



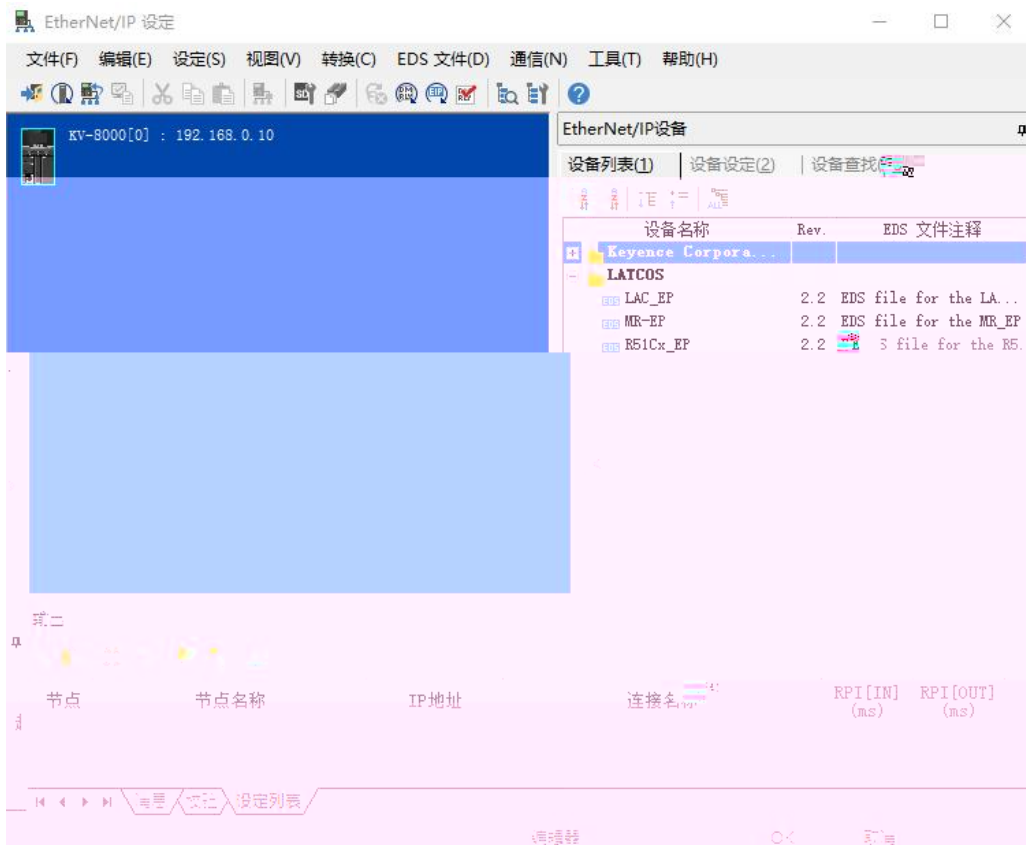
EDS

EDS



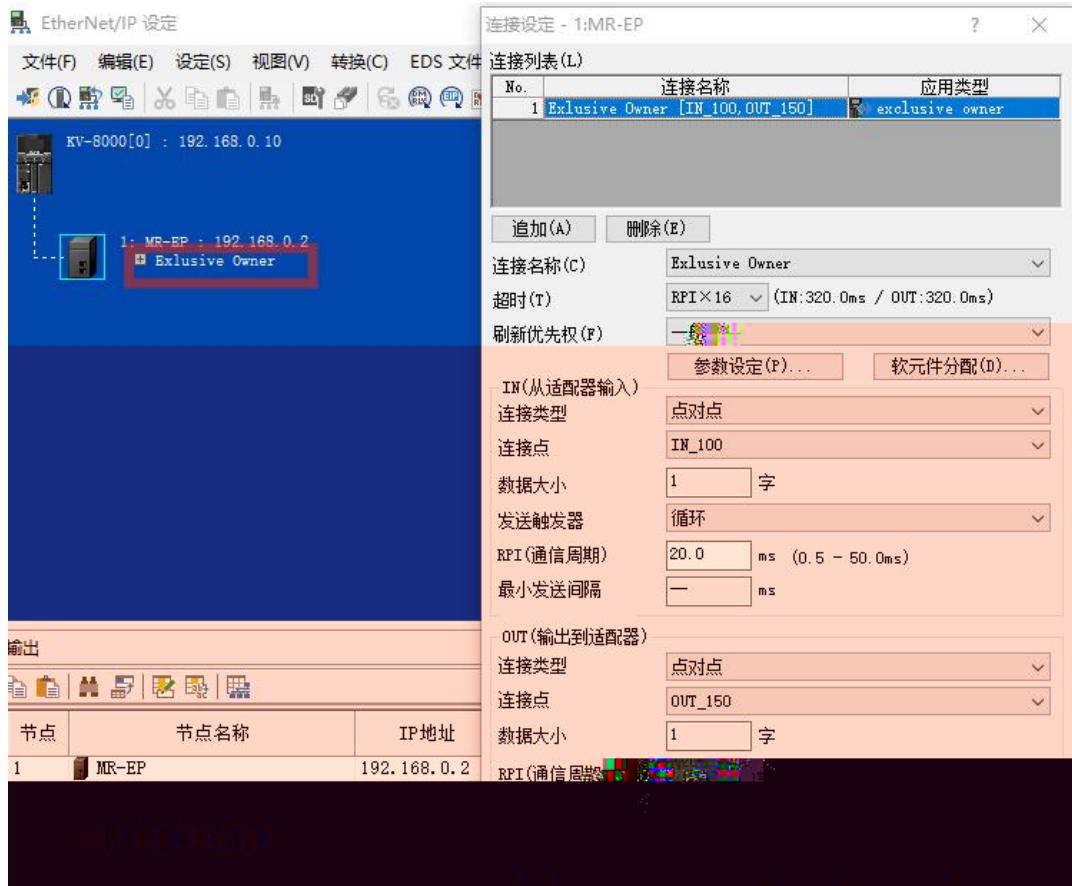
EtherNET/IP

"MR-EP"



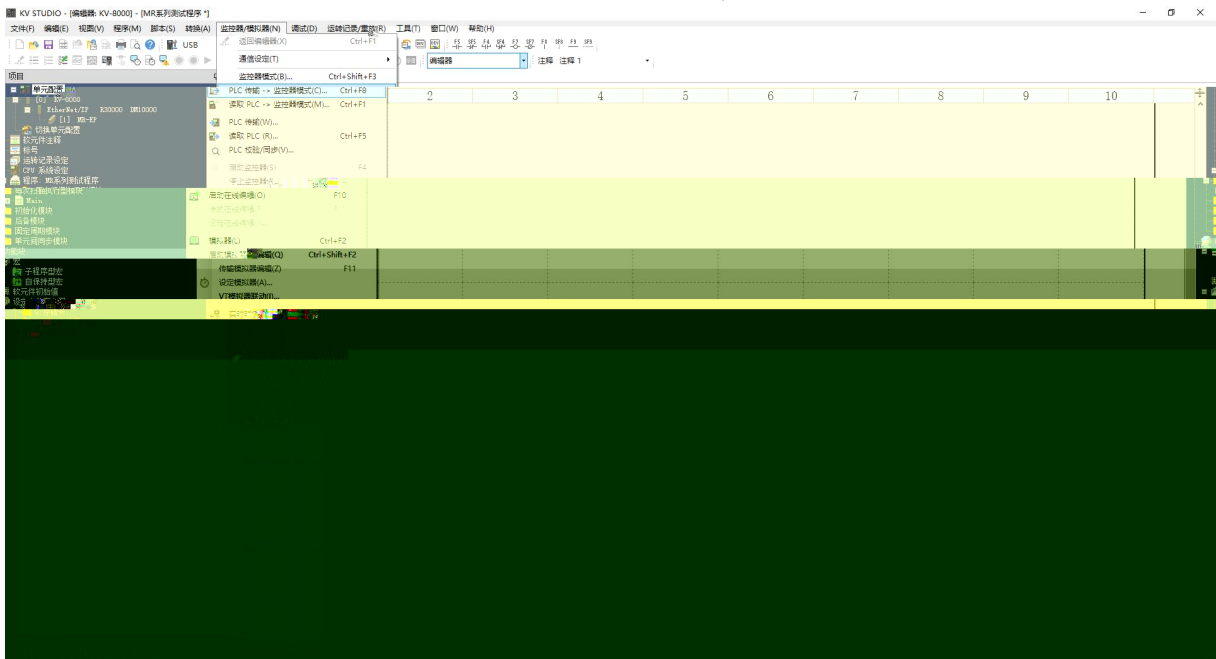


“Exclusive Owner”



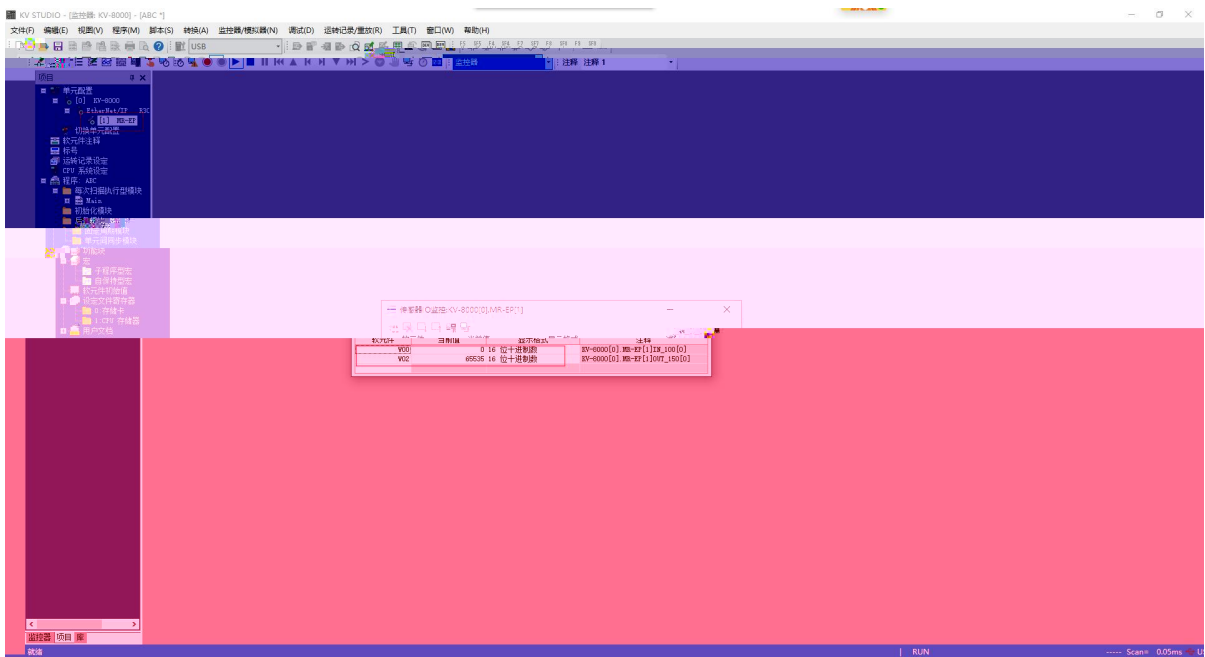
PLC

plc



PLC

" " " "



1.

windows

ping

IP

ping

ping

IP

IP

2

RUN

ERR

IP

IP

IP



凌科自动化
LATCOS

AT-10007



6300410007-001



www.laticos.cn