



2023-03-23

2023 03 23

2023 03 23

R PLC CCLINK_IE_Field Basic JP-CE IO

R PLC CCLINK_IE_Field Basic JP-CE IO GX-WORKS3
IO

- GX-WORKS3

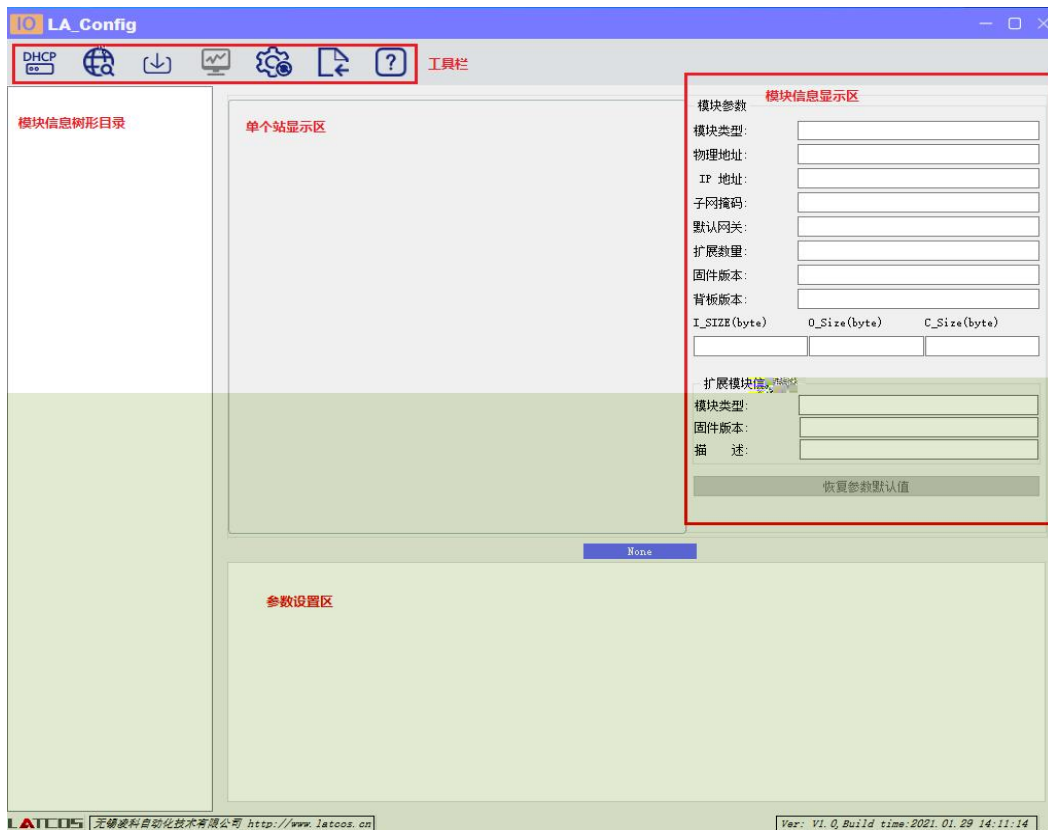
1. R PLC IO

2. PLC Ethernet CCLINK_IE_Field Basic IO


LAEConfig

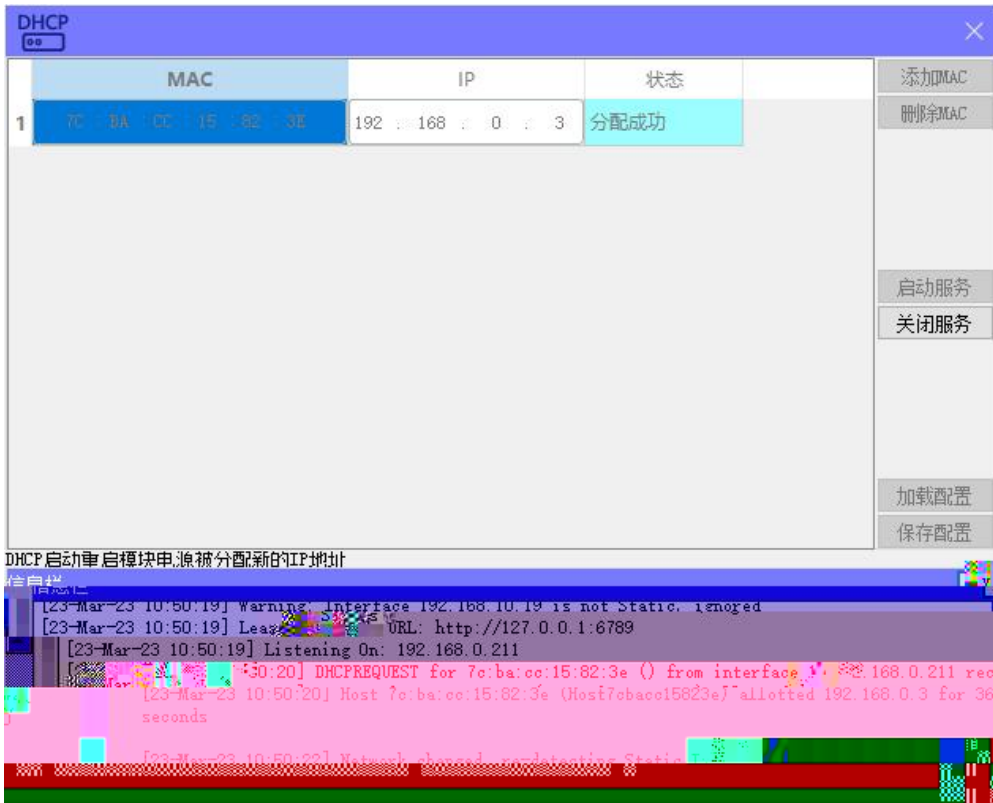
IP

IP 192.168.0.x






 DHCPService " MAC" " MAC"
 MAC IP " "
 IP





mac	IP地址	子网掩码	默认网关	模块名称	状态
-----	------	------	------	------	----

扫描时间: 5 :S

全局扫描 修改IP 恢复出厂设置 重启模块

mac	IP地址	子网掩码	默认网关	模块名称	状态
1 7C-BA-CC-15-82-3E	192 . 168 . 0 . 3	255 . 255 . 255 . 0	192 . 168 . 0 . 1	JP0808X_EP	未操作

扫描时间: 5 :S

扫描进行中: 100%

全局扫描 修改IP 恢复出厂设置 重启模块

IP " IP" IP



/

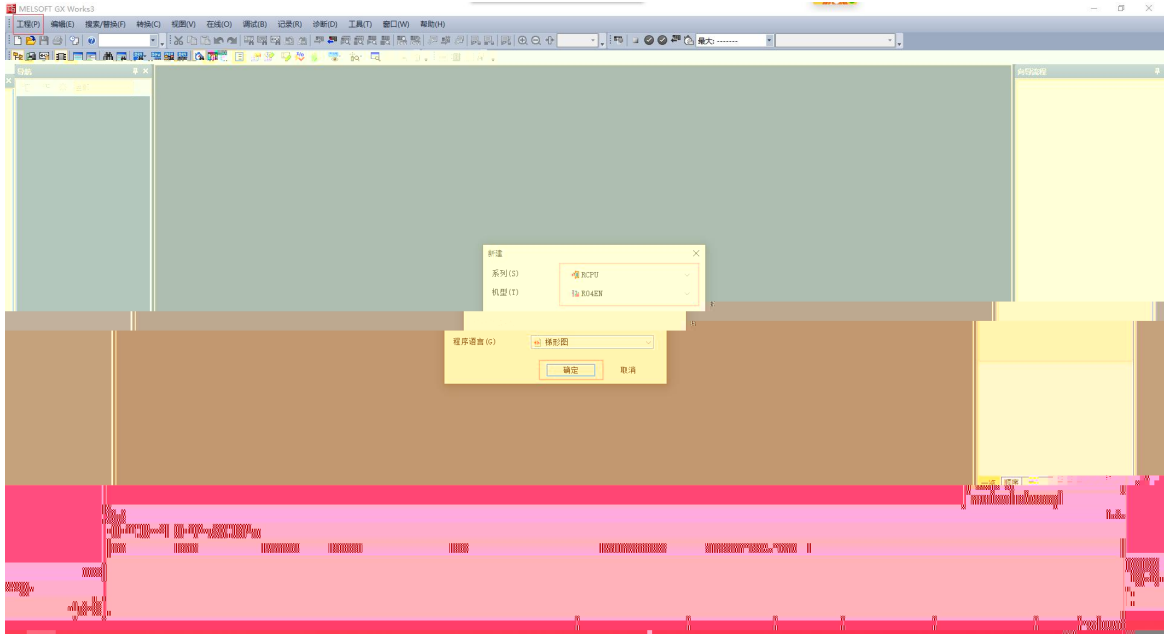
1

2) DO_ 0..7 DQ0.x bit
 DQ0.x Bit0 DQ-0.0 "Error Mode"
 bit "1" "Error Value[7..0]" bit DQ0.x

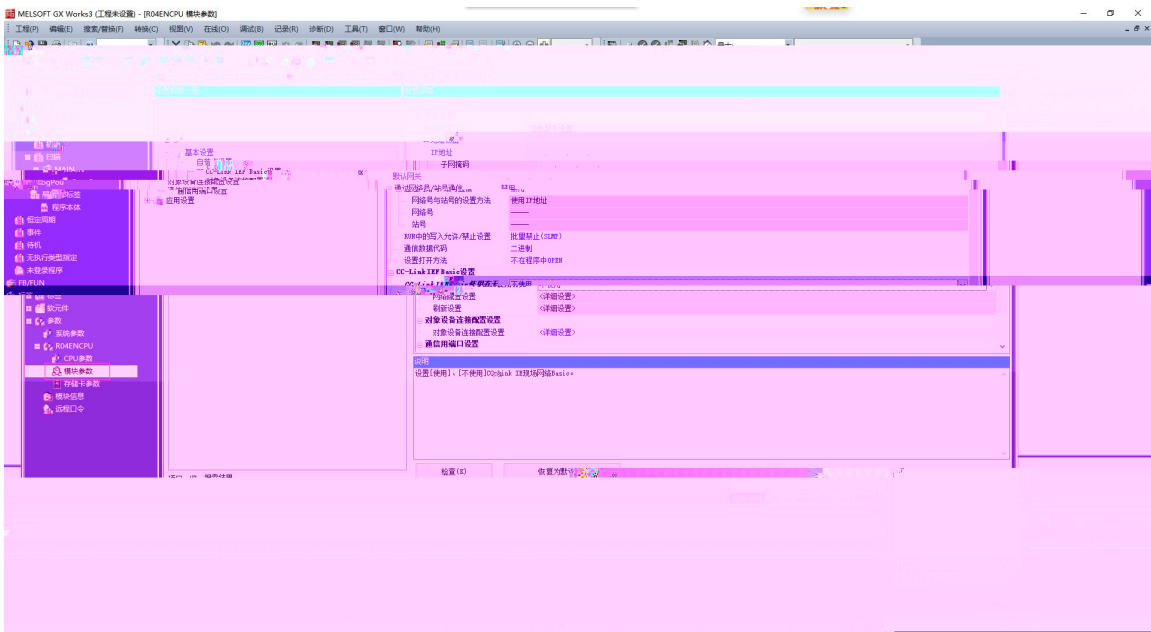
3) DO_ 0..7 "Error Mode[7..0]" bit
 DQ

4) "  "

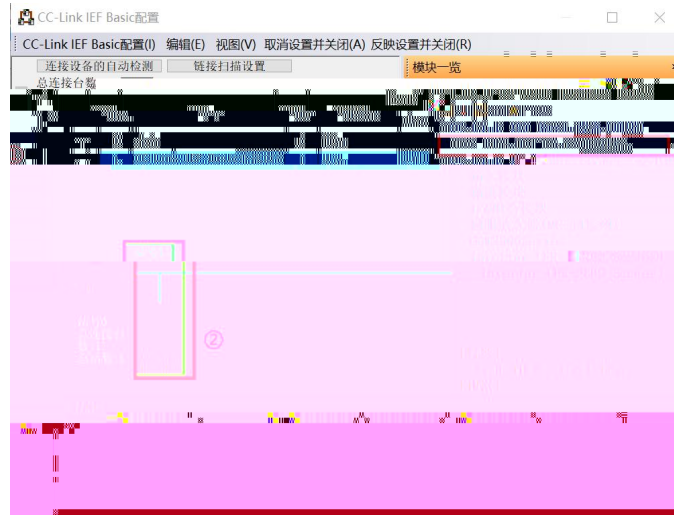
CPU GX Words 3 " " " " PLC CPU R04EN
CPU R EN cpu



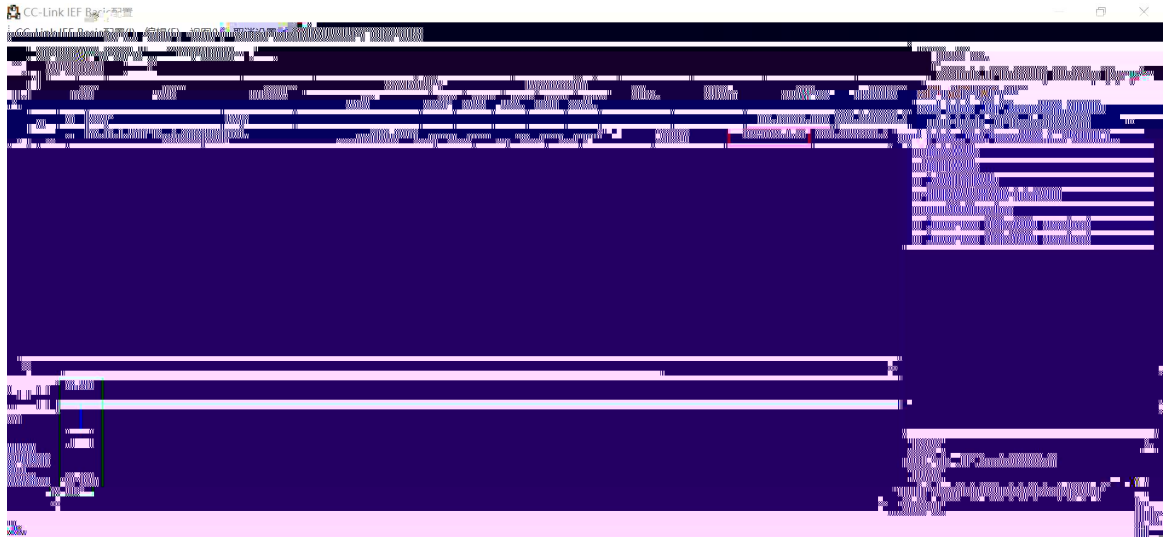
/R04ENCPU/ /



PLC IP



CC-Link IE Field Basic IP



“ ”





凌科自动
LATCOS



www.latcos.cn